

**110 Miles** – Pacific Coast (Orange County) to San Bernardino Mountains (San Bernardino County)  
**8 Miles** – Completed from Riverside County line to Waterman Avenue San Bernardino  
**<15 Miles** – Remains to be built within San Bernardino County  
**<1.6 Mile** – Phase IV, Reach C



# SANTA ANA RIVER TRAIL

- PHASE I (Completed 2007)
- PHASE II (Completed 2005)
- PHASE III (In Design)
- PHASE IV, A (In Design)
- PHASE IV, B (In Design)
- PHASE IV, C (In Design)
- PHASE IV, D (Future)
- USFS Trail Link (Other Agency)





# SANTA ANA RIVER TRAIL

## Phase IV, Reach C

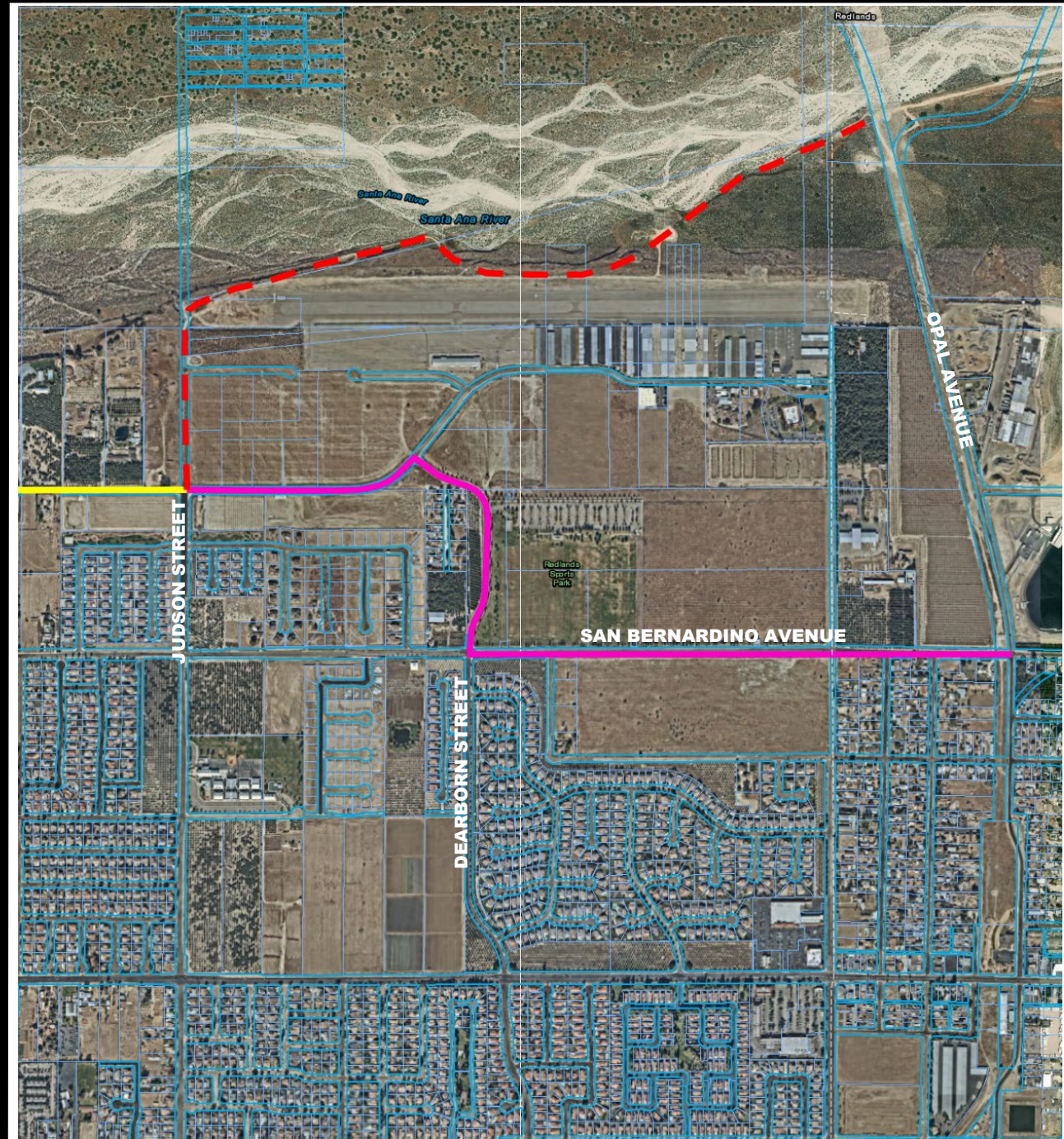
**Reach B** – Remains the same (Class I and III)

### Obstacles of Original Alignment

- Within the runway protection zone
- Conflict with future planned airport expansion
- FAA Non-Aeronautical Use Releases within this area have not been successful for similar projects

### Community Benefits of the Alternative Alignment

- Provides trail users access to Redlands Sports Park, local farm stands and other community destinations while still being an integral part of the Santa Ana River Trail (SART)
- Will continue the progress of the overall 110 miles SART from the Pacific Coast to the San Bernardino Mountains





# SANTA ANA RIVER TRAIL Phase IV, Reach C

## Safety

- The original alignment within a RPZ is a FAA (federal) safety hazard.
- Improving the alternative alignment increases safety not only for potential trail users but for bicyclists who utilize the non-existent or existing Class III bike lanes by providing a Class II bike lane
- Changing the original Class I bike lane to a Class II bike lane would still increase safety when compared to a no-build scenario

- If this change is not approved the County's only foreseeable option would be to not build this portion of SART because the route through the airport is not possible
- This reach of SART (1.6 miles) is a small portion of the overall SART (110 miles) – a no-build scenario would discourage the community and visitors to use the SART because the ultimate destination of reaching the mountains would be less feasible

