

Caltrans Response to Tree Mortality

Agenda Tab #26
Item 4.7

meeting date:

January 18, 2017

presented by:

Caltrans
Tony Tavares
Chief, Division of Maintenance

presented to:

California Transportation Commission
Susan Bransen
Executive Director

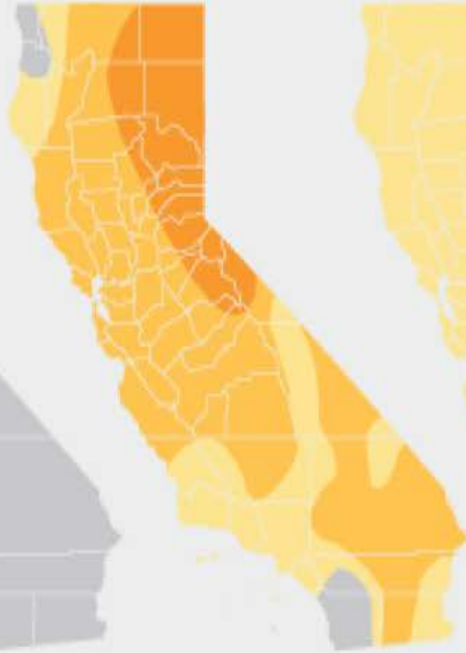


Tree Mortality Tied to Historic Drought

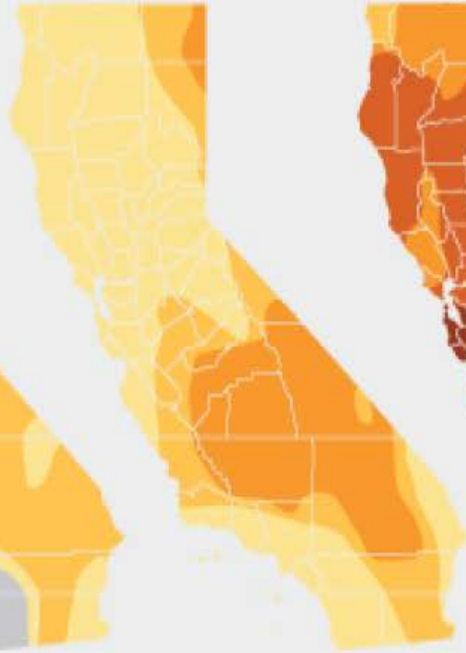
2011



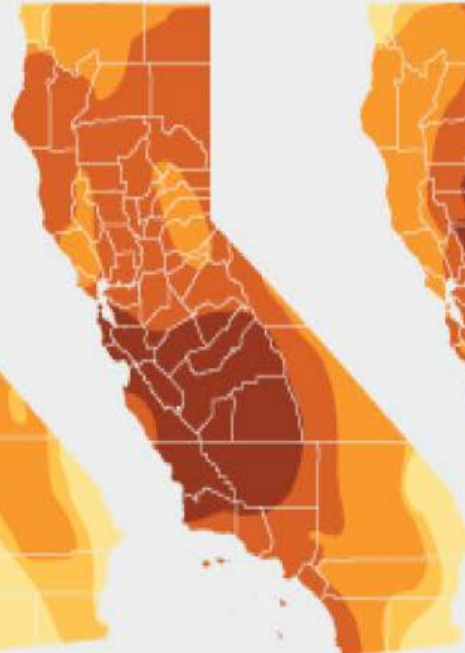
2012



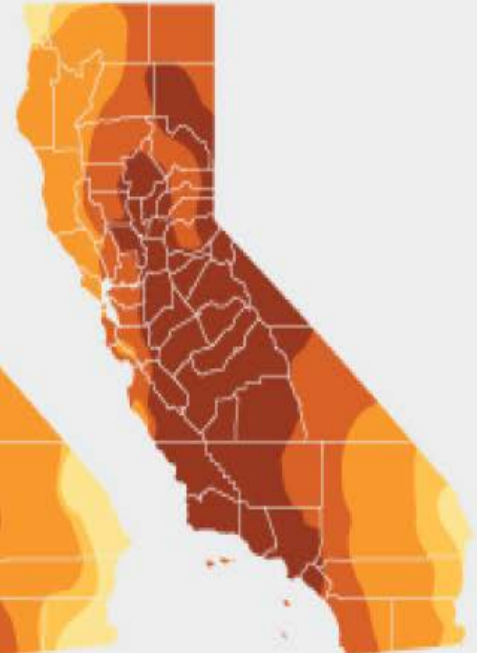
2013



2014



2015

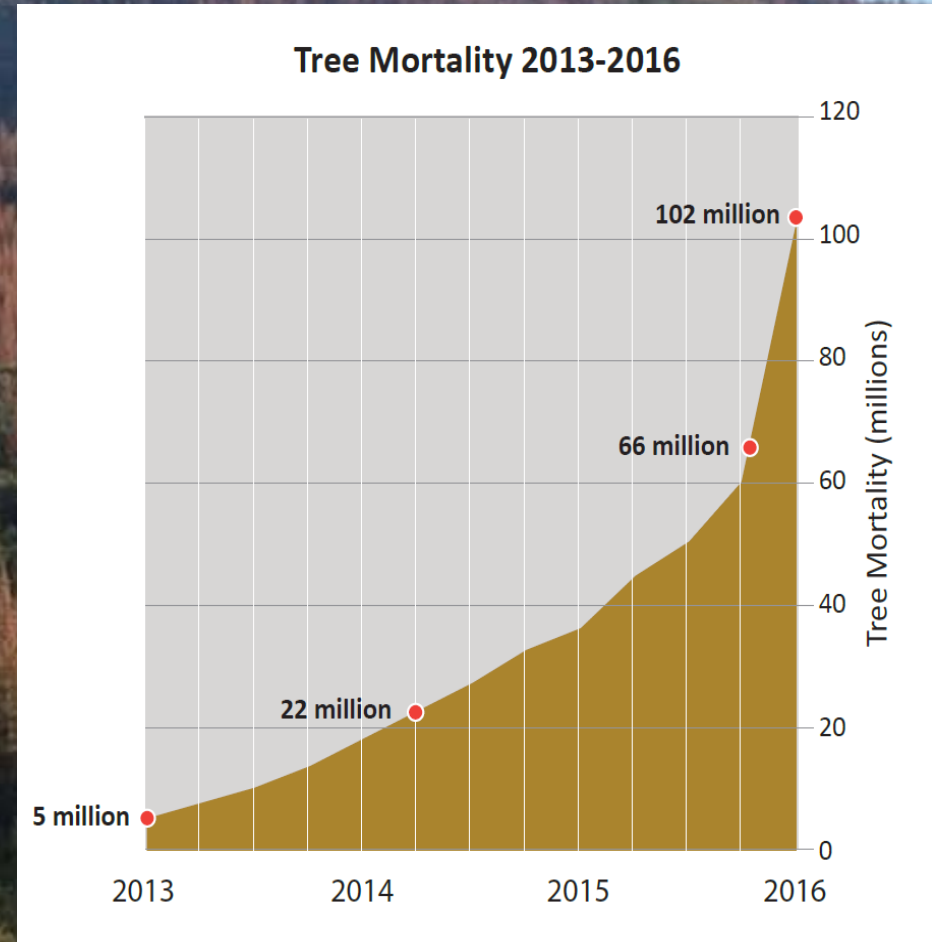
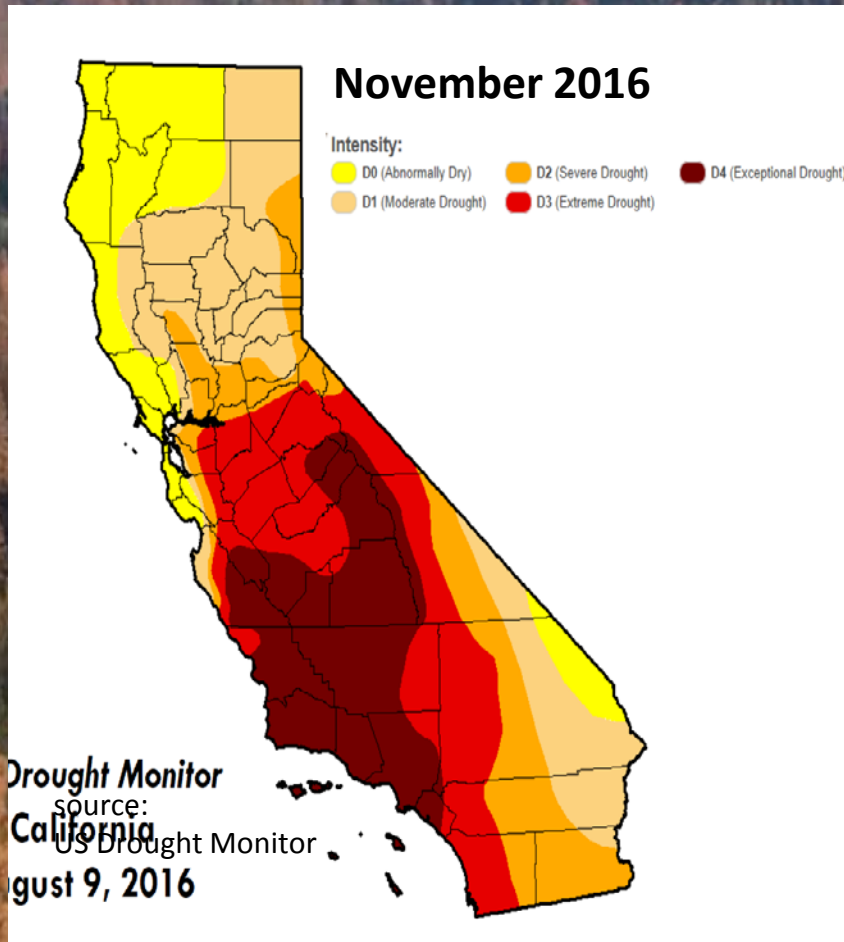


Abnormally dry
Extreme drought

Moderate drought
Exceptional drought

source: US Drought Monitor
Severe drought

Tree Mortality = 102 M



Tree Mortality

Northern Fresno County

May 2015



February 2016



Governor's Tree Mortality Emergency Proclamation

October 25, 2015



“...the tree die-off is of such a scale that it worsens **wildfire risk** across wide regions of the State, presents life safety risks from **falling trees** and worsens the threat of **erosion** across watersheds...”

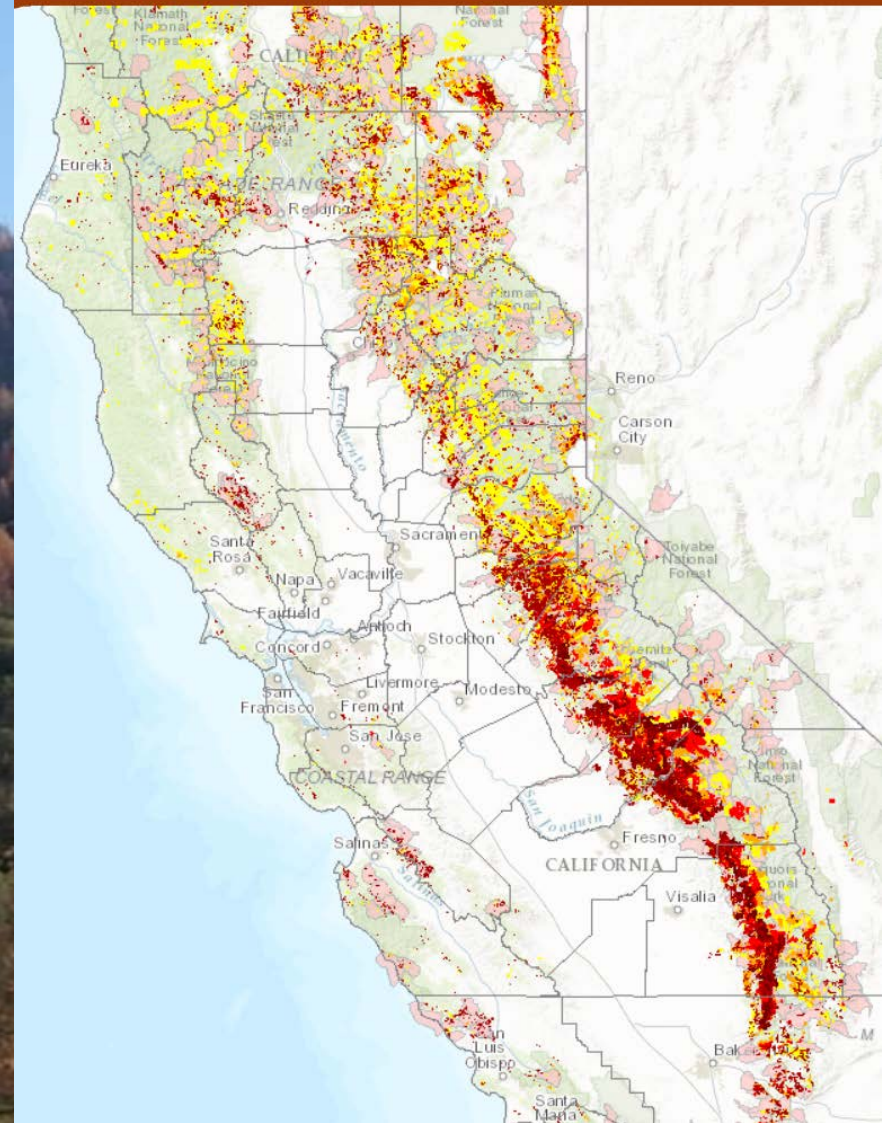
Epidemic Progression

Southern and Central Sierra Nevada Region



source:
Tree Mortality Task Force
January 2017

Tree Mortality Viewer



Tree Mortality Count

102 M Total statewide

source USFS and Cal Fire

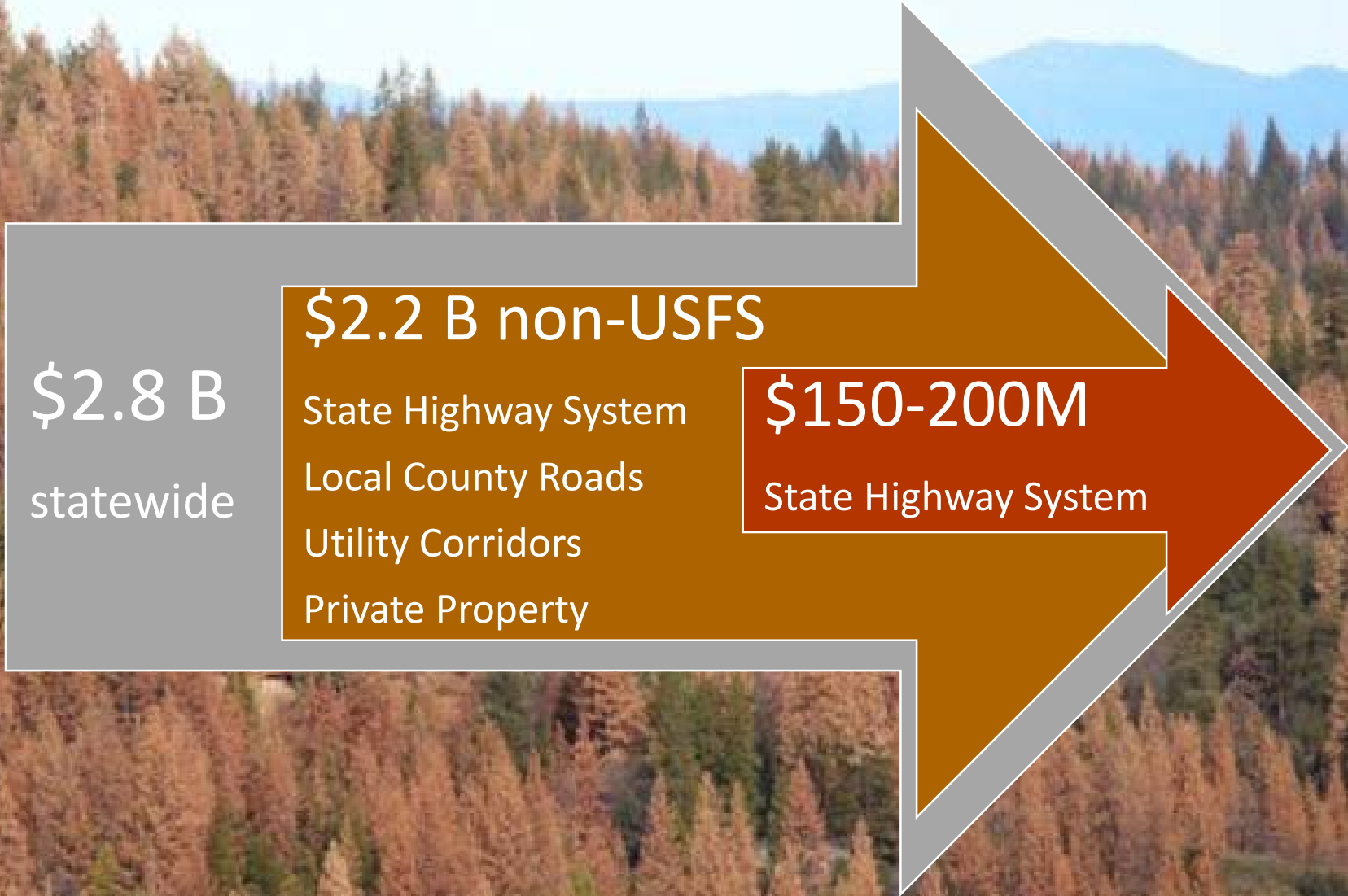
5.5 M High Hazard Trees

100,000+ Caltrans R/W

Tier 1 High Hazard Zones
expanding northward



Tree Removal Estimate

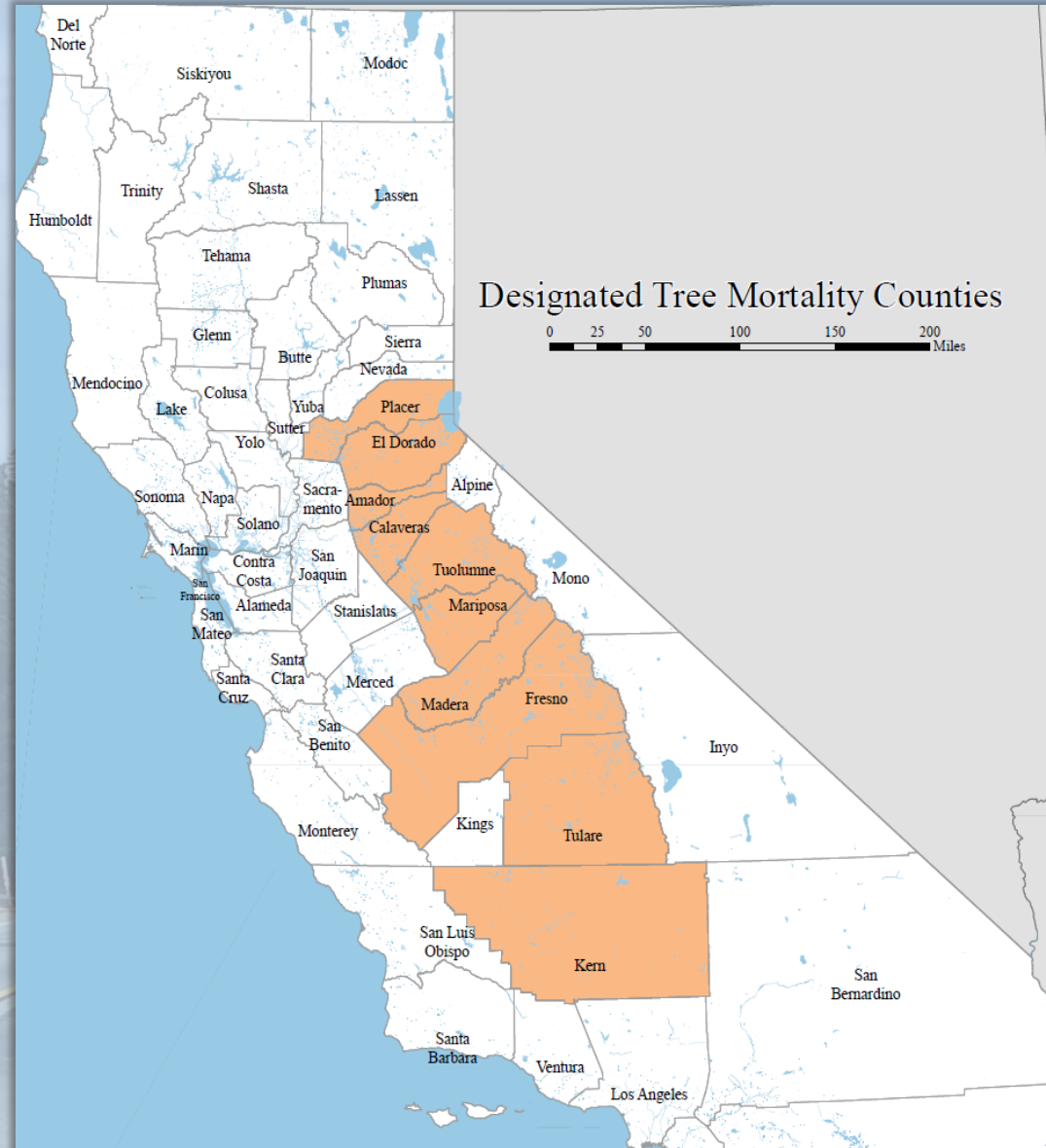




High Priority

10 Focus Counties

Kern
Tulare
Fresno
Madera
Mariposa
Tuolumne
Calaveras
Amador
Eldorado
Placer





Emergency Response

CURRENT as of 12/31/16

Director's Orders

26 Emergency Projects

\$78.8 M allocated
construction capital

*Including Supplemental Amendments
into 2016 SHOPP*

2 Supplementals approved

District 6 @ **\$6.1 M**





Emergency Response

STRATEGY MOVING FORWARD

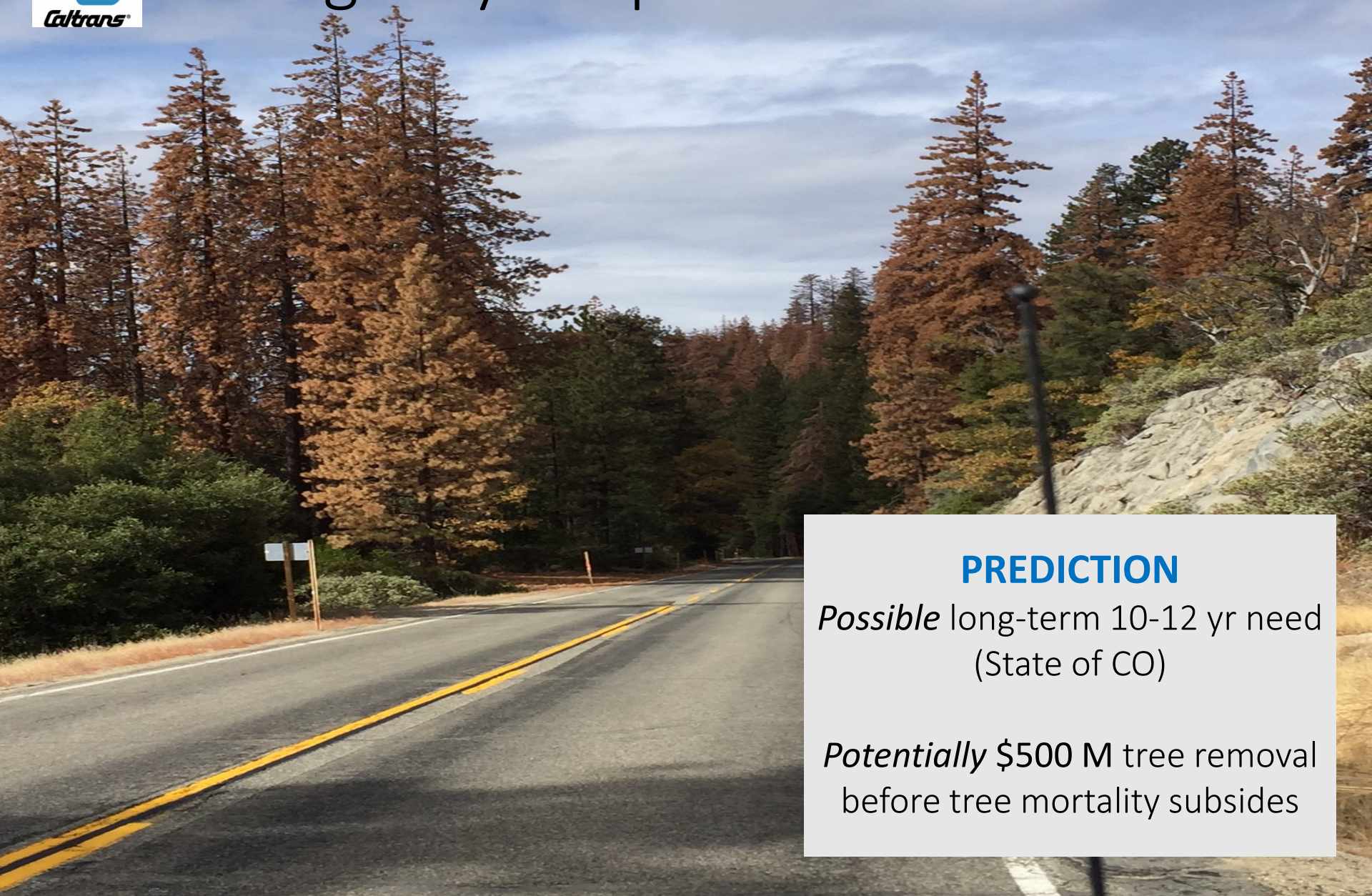
17/18 FY

- Bring **8** projects to Commission to amend 2016 SHOPP 131 Permanent Restoration Program
- Propose additional projects for amendment as tree mortality spreads & migrates within SHS
- Continue to use Emergency Project process where unforeseen conditions require immediate response





Emergency Response



PREDICTION

Possible long-term 10-12 yr need
(State of CO)

Potentially \$500 M tree removal
before tree mortality subsides