



# Mendocino County Department of Transportation

## REDEMEYER ROAD EXTENSION PROJECT

### Project Overview

The Redemeyer Road Extension is a crucial transportation project aimed at enhancing access and safety for communities within the Ukiah Valley including Pepperwood Place, Deerwood, El Dorado, Vichy Springs, and the Guidiville Rancheria. Currently, Redemeyer Road serves as the only access route, but its north terminus is separated from these communities by the Russian River, with the nearest crossing located approximately three miles south at Vichy Springs Road resulting in limited emergency response capabilities during natural disasters or emergencies. This project will bridge this gap by providing a much-needed all-weather crossing over the Russian River, significantly improving emergency response times and public safety service. Moreover, it aligns with regional transportation plans, addressing long-standing needs and priorities.

### Project Scope

- The project includes the construction of a two-lane arterial local road with paved shoulders and a local bridge structure across the Russian River.
- It will require right-of-way acquisition from various property owners to implement the new alignment.
- The total estimated project cost for approximately 52 million, including completion of Project Approval and Environmental Documentation (PA&ED), Plans, Specifications, and Estimates (PS&E), Right-of-Way Acquisition, and Construction. 12 million has been previously awarded for PA&ED and PS&E.

### Proposed Schedule

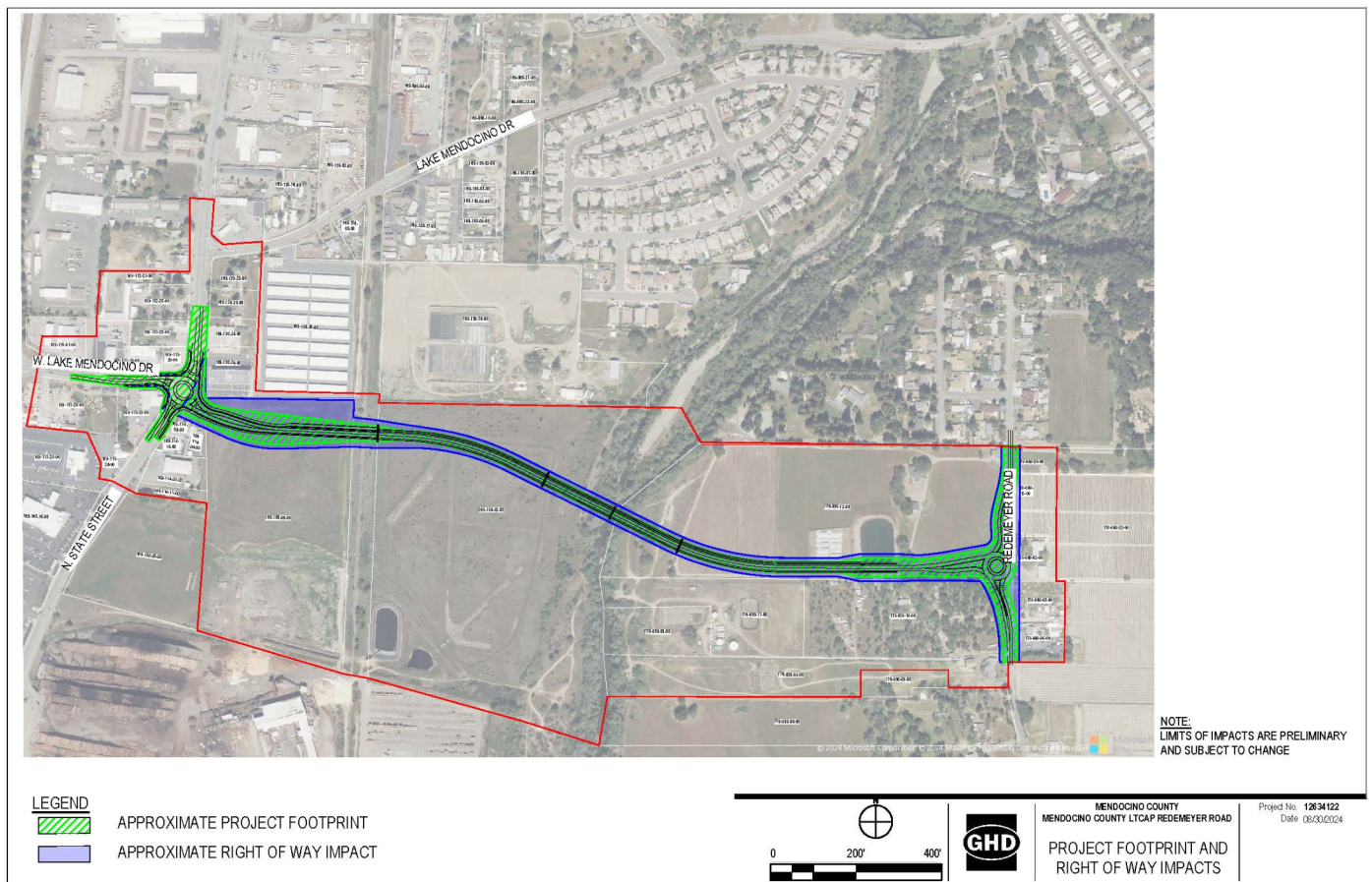
Phase	Anticipated Completion Date
Project Approval and Environmental Documentation	In Progress, 2024
Plans, Specifications, and Estimates	2025
Right of Way	2026
Construction	2028

## Benefits to Climate-Vulnerable Communities:

The Redemeyer Road Extension project offers numerous benefits to climate-vulnerable, under-resourced, and underserved communities. By improving emergency response and access during natural disasters, it enhances public safety and community well-being. The project's implementation prioritizes the needs of vulnerable communities, ensuring they are better equipped to cope with climate challenges. Additionally, the increased transportation connectivity will stimulate economic opportunities and support community resilience.

## Climate Resiliency and Transportation Equity:

The Redemeyer Road Extension enhances climate resiliency for transportation infrastructure and communities by providing a reliable second evacuation route during disasters. This crucial all-weather crossing improves access for emergency responders, ensuring timely assistance to residents and reducing vulnerability during climate-related events. The project prioritizes transportation equity by closing the gap in access for underserved communities, including the Guidiville Rancheria, thus supporting social and economic inclusion.



## Image Description

A rendering of a map of the proposed project, showing extension, connecting Lake Mendocino Drive to Redemeyer Road