



Glydways Introduction

March 2024

Tab 24

GLYDWAYS

Glydways: Automated Transit Network



Origin to Destination

On-demand, personal,
non-stop rides



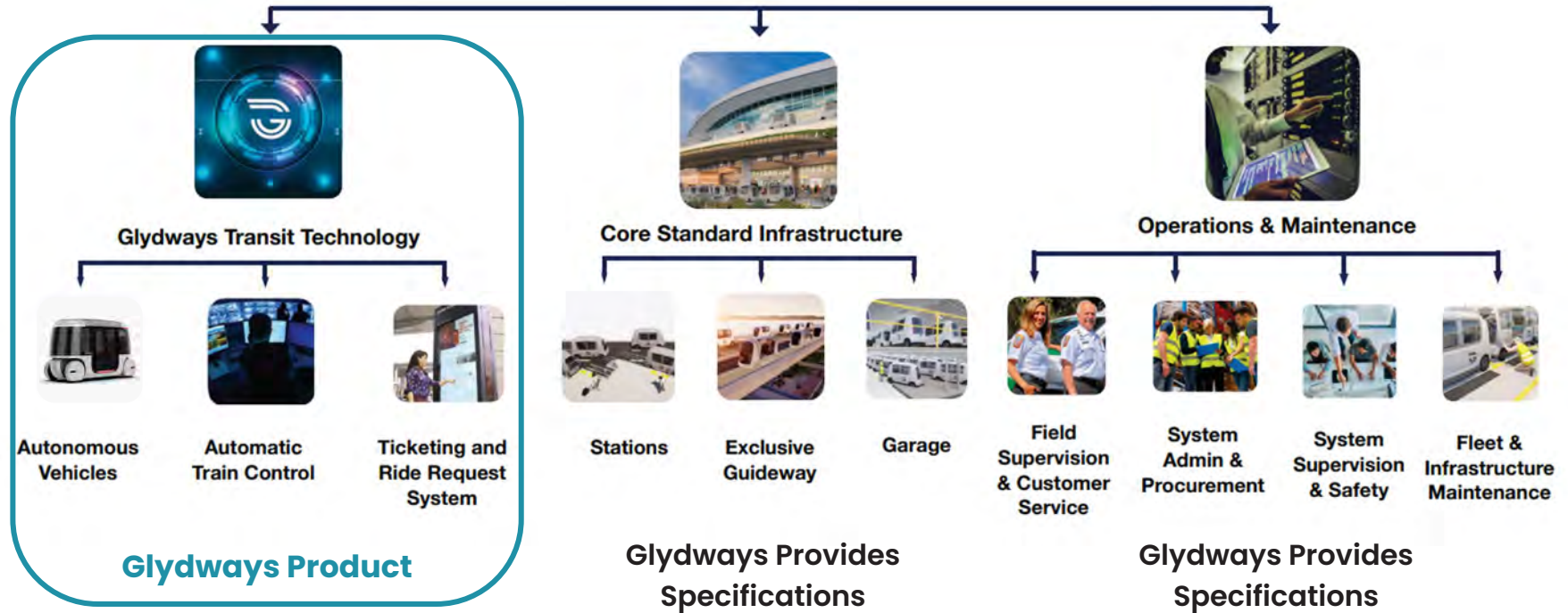
Dedicated Guideway

No Pedestrians or Cars:
safety & capacity

Glydways: Automated Transit Network

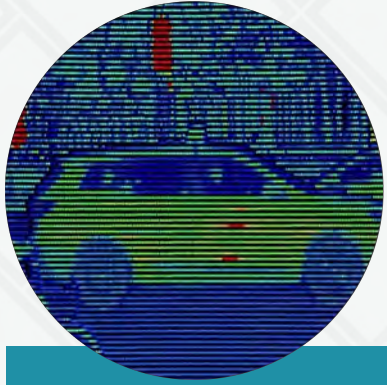


Glydways Implementation Overview



All Enabled by GlydwaysOS, our core IP,
and commodity automotive, AV, and BEV hardware

Robust, Reliable, High-Safety-Integrity Autonomy



Adopt mature technologies



Skip experimental technologies



Leverage the controlled operating environment

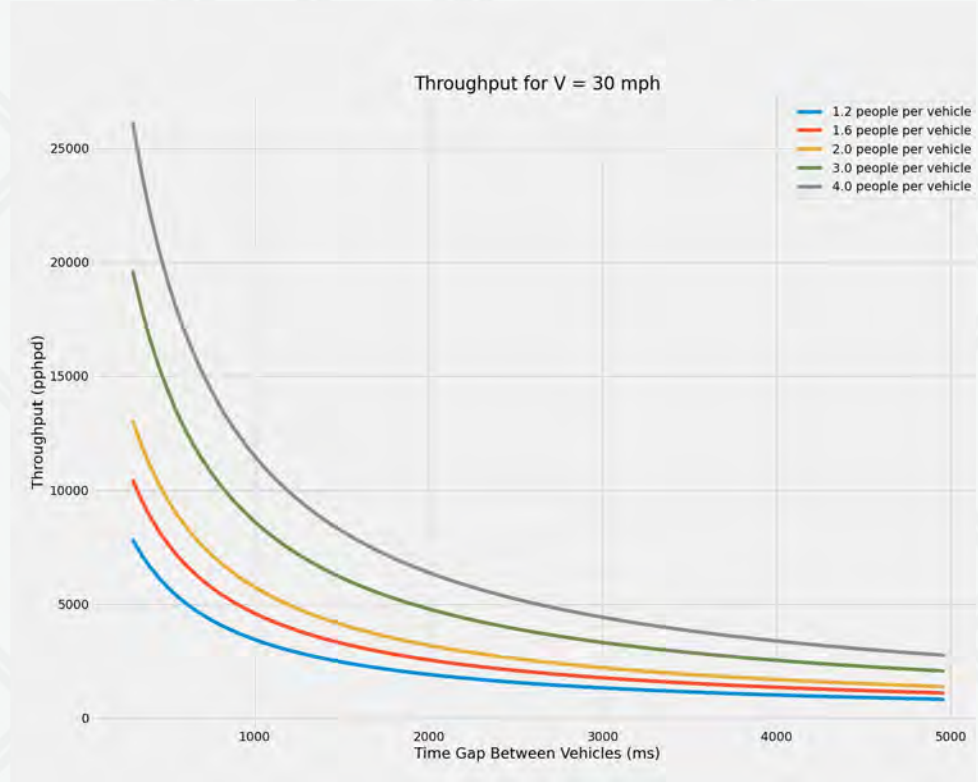
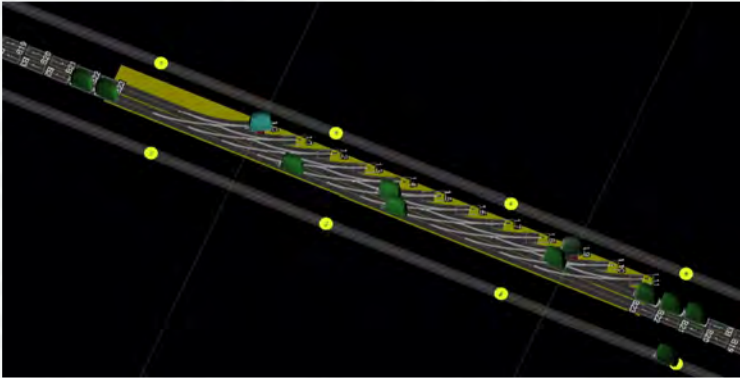
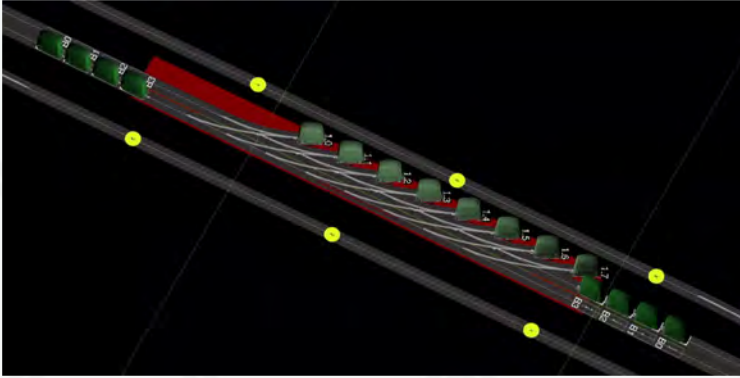


Leverage high levels of redundancy

Leads to an Automated

System

High-Capacity & Efficient Coordinated System

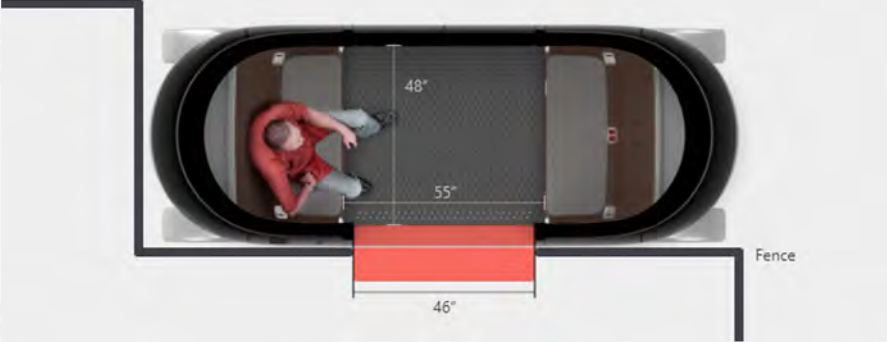


Our Vehicle



Designed for All Riders

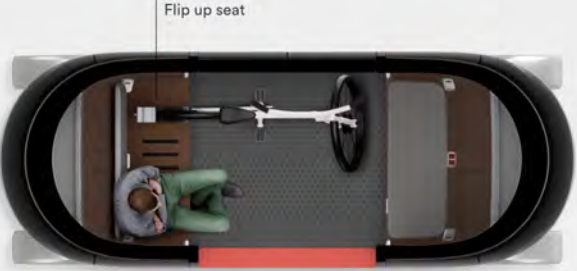
Floor Space



Wheelchair



Bike



Stroller



Low Cost, Flexible Infrastructure



At-Grade



Elevated



Underground

Glydways In Action @ GoMentum Station



California Projects: Start Build 2026

San Jose Airport to Diridon Station

- 4.4 Miles, 9 Stations, P3 Delivery, 2029 Start of Ops
- Interconnecting SJC with Multi-Modal Diridon Station



Contra Costa County Transit Integration

- 28 mi, Better Connecting 4 Cities to 5 Rail Stations
- Supporting Smart Growth and Future Development



Ontario Airport to Transit Connector

- 4.2 Miles, Underground, Progressive Design Build
- Connection to Metrolink + Future Brightline Station



Glydways extends the reach of existing transit modes

Transitioning riders from cars to transit. Our projects interconnect with:

- BART
- CalTrain
- CA HSR
- Brightline
- VTA
- Tri-Delta
- OmniTrans
- AmTrak



Thank You
California Transportation Commision



Project Win: San Jose Airport to Diridon Station

- P3 Delivery, revenue risk model
- Revenue risk: transit fares cover all OpEx
- Low-cost to implement, <\$160M/mile req.
- 4.4 Miles, ~70% Elevated, all on Public RoW
- 9 Stations
- Estimated 2040 Ridership: ~8M Annually
- Studying Multiple Expansions
 - 9 mile Stevens Creek
 - Several 0.5-2 mile transit extensions

