

Sears Point to Mare Island Improvement Project

California Transportation Commission Meeting

May 17, 2023



“ONE CORRIDOR, ONE TEAM, MANY SOLUTIONS.”





Public Comments on Proposed Toll Facility on State Route 37

The Bay Area Infrastructure Financing Authority (BAIFA) is applying to operate a **toll facility on State Route 37 in Solano and Sonoma Counties** under Streets and Highways Code Section 149.7, as amended by Assembly Bill (AB) 194.



- **Resilient SR 37 Corridor**
- **Project Description**
- **Project Benefits**

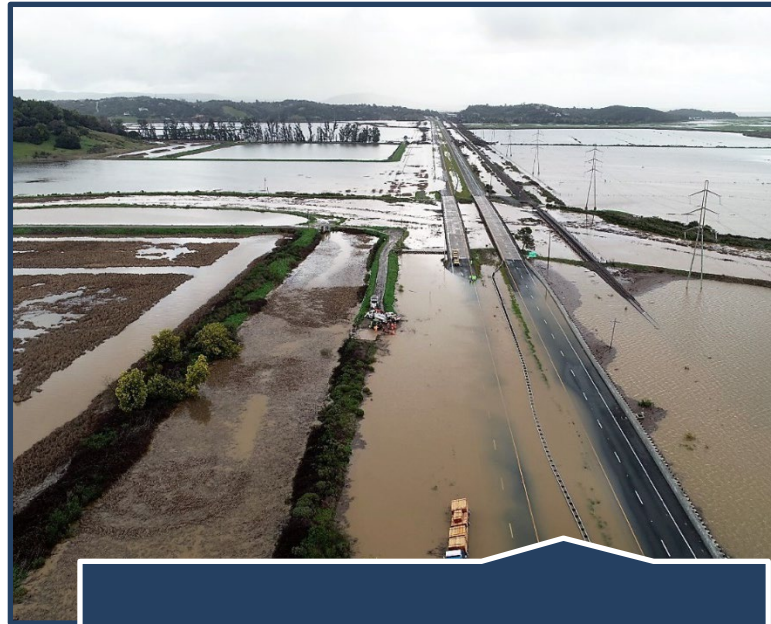
Highway 37: Regionally Significant 21-Mile East-West Corridor



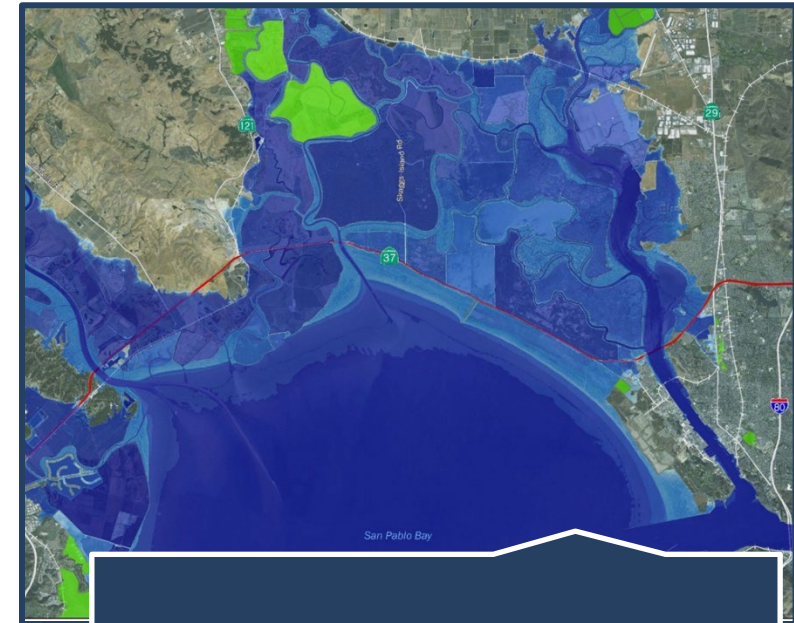
Corridor Challenges



Congestion



Flooding



Sea Level Rise

Resilient State Route 37 Program: Phased Implementation Concurrent Project Development. Deliver Early Community Benefits.

Environmental - Design - Construction

Sears Point to Mare Island Improvement

- Address Equity
 - *Improve Travel Times and Reliability
 - *Support Transit and Rideshare
- Advance Baylands Restoration
- Enhance Roadway Resilience and Public Access

Early Benefits



Transition

SR 37 Sea Level Rise Adaptation (I-80 – US 101)

- Long Term Corridor Resilience (Planning and Environmental Linkages Study)
- Multiple Project Implementation (Flood Reduction Project – 101 to Atherton)
- Equity, Bike, Pedestrian, Transit, and Public Access
- Advance Mitigation

RESILIENTSR37



Today

2027

2040

2050



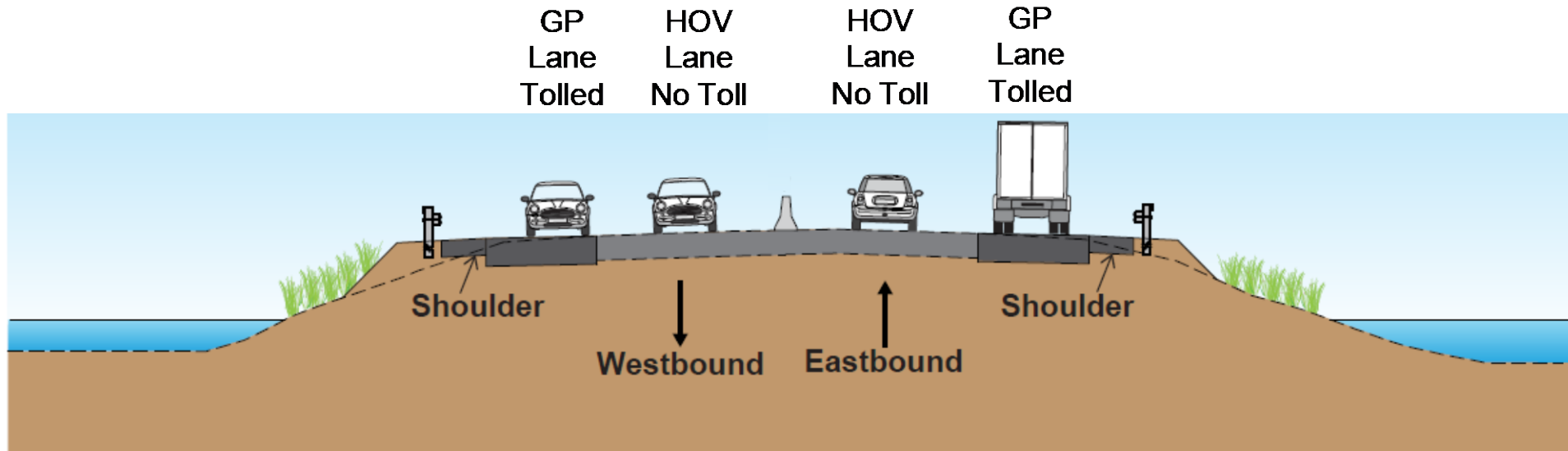


- **Resilient SR 37 Corridor**
- **Project Description**
- **Project Benefits**



Project Components

- HOV Lanes
- Bus Transit Service
- Public Access Improvements
- ITS Improvements
- Ecological Resilience
- Implementation of Tolling *
 - Provide Necessary Funding For This Project
 - Manage Traffic Demand and Vehicle Miles Travelled (VMT)

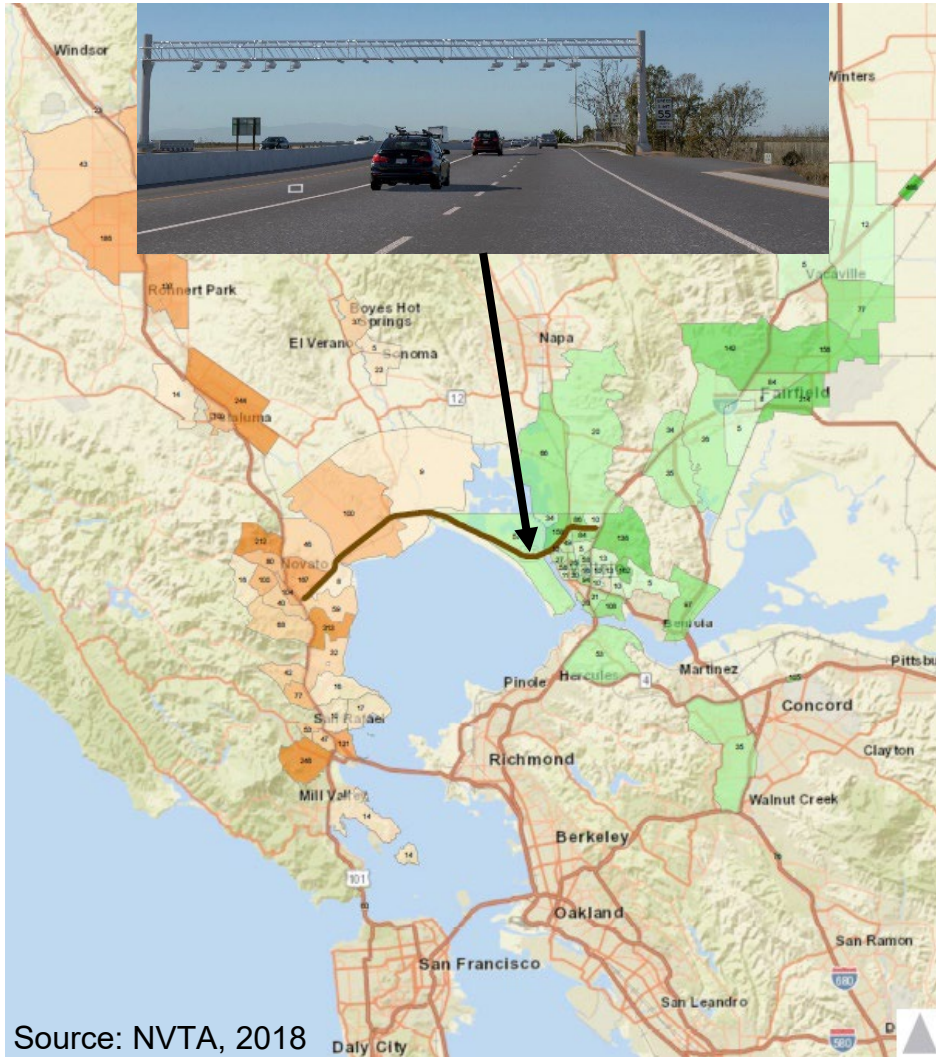


* Approval is required from the California Transportation Commission for tolling authority.



SR 37 Corridor Travelers and Toll Gantry Locations



Westbound Traffic



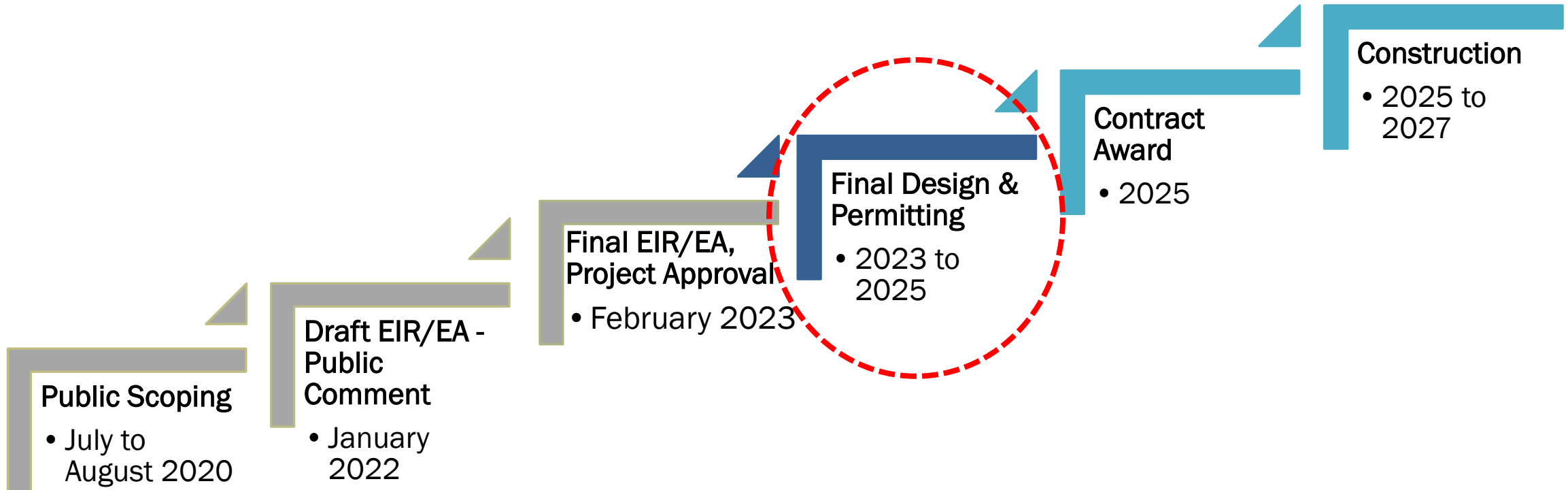
Source: NVTA, 2018

Eastbound Traffic



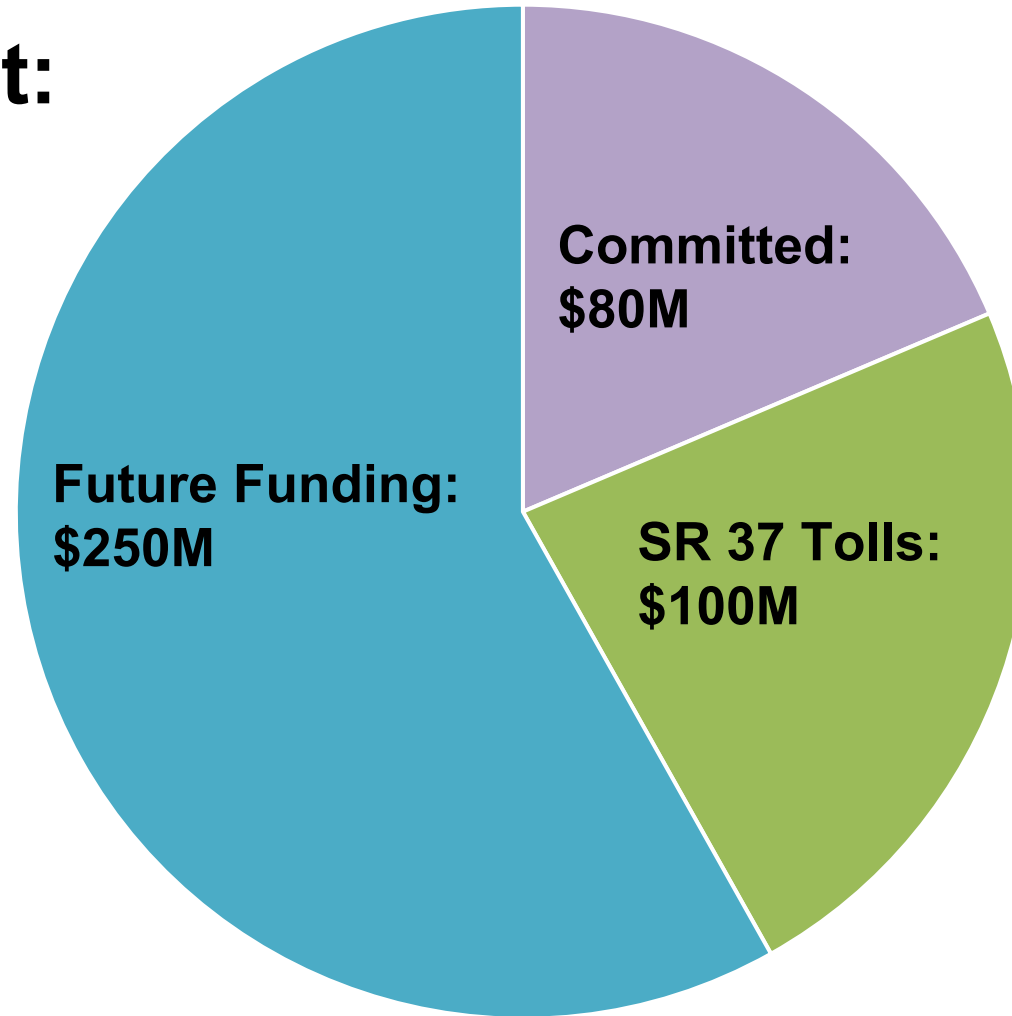
 Origin
 Destination

Project Timeline



Project Funding Plan

**Total Project Cost:
\$430M**



* Total project cost is currently estimated at \$430 million. The project cost and funding plan are subject to change.

- **Resilient SR 37 Corridor**
- **Project Description**
- **Project Benefits**



Delivering Transportation Equity

Congestion Relief

Immediate congestion relief for SR-37 travelers, reduced travel times, access to jobs, economic vitality Mare Island

New Bus Transit Option

From Vallejo to San Rafael

Toll Discounts

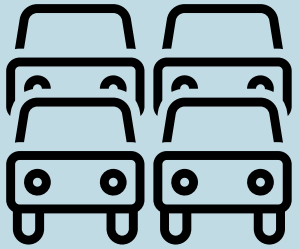
For low-income households

Improved Public Access

Trail connections/enhancements



Congestion Relief- Project Benefits Outweigh Project Costs



Reduce Congested Travel Times

- Eastbound PM:
from 100 minutes to 26 minutes
- Westbound AM:
from 60 minutes to 30 minutes



Traveler Benefits from Delay Time Saved

- Opening Year (2027):
\$85M Annually
- In 5 Years (2027–2032):
\$578M Total *
- Reduces Vehicle Miles Traveled



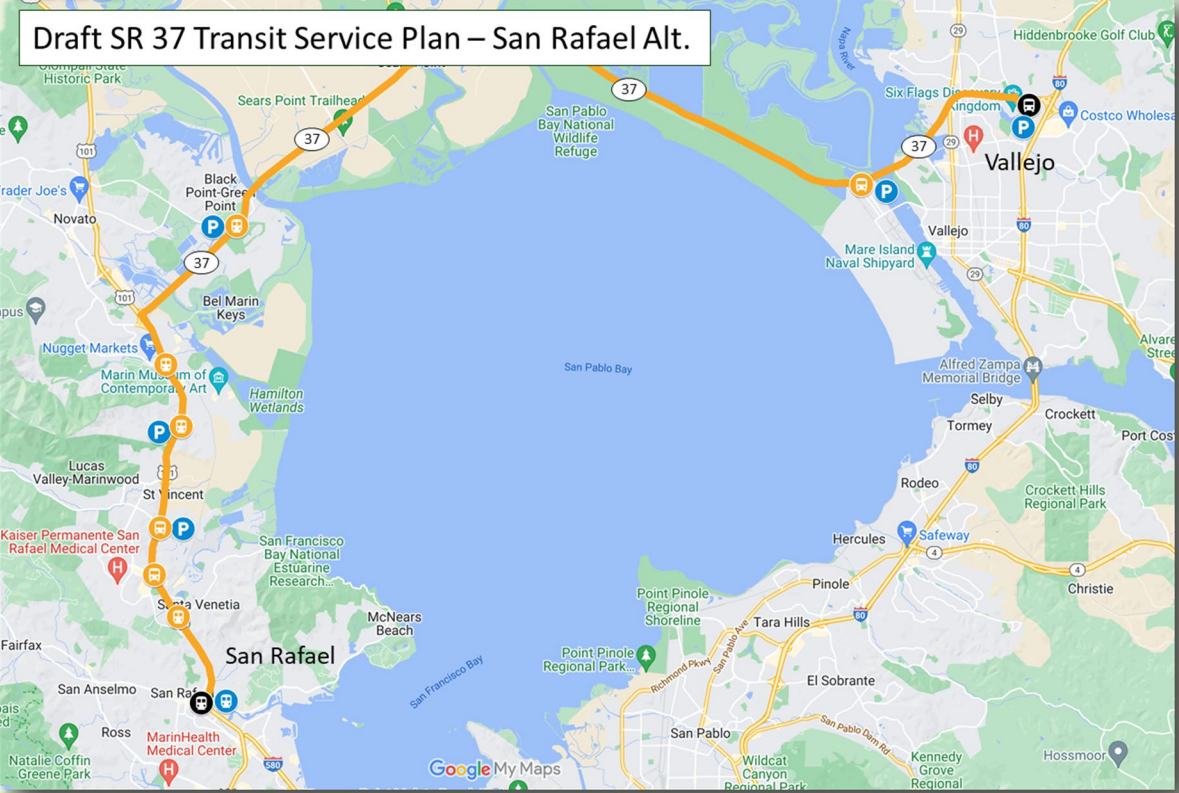
* Note: Traveler delays- without the project- are projected to increase over time with increased traffic demand. These benefits compare to project costs of approximately \$430 million.



SR 37 Transit and Rideshare Implementation Plan

Transit Service – Novato/San Rafael Options

- **Weekday all-day SolanoExpress** service between Vallejo Fairgrounds and Novato.
- **Future SR 37 HOV** operation will make transit faster and reliable.



Mobility Hubs



Park and Ride



First/Last Mile Mobility-on-Demand



Ridesharing Platform

Consistent with Existing Bay Area Equity Programs

Tolling Equity Discount Program/ Other Regional Initiatives

- I-880 Express Lanes START
- Clipper® START
- Bay Area Toll Authority's Equity Action Plan

Community Engagement and Public Communication Plan

- North Bay Community Based Organizations
- Multilingual Social & Traditional Media



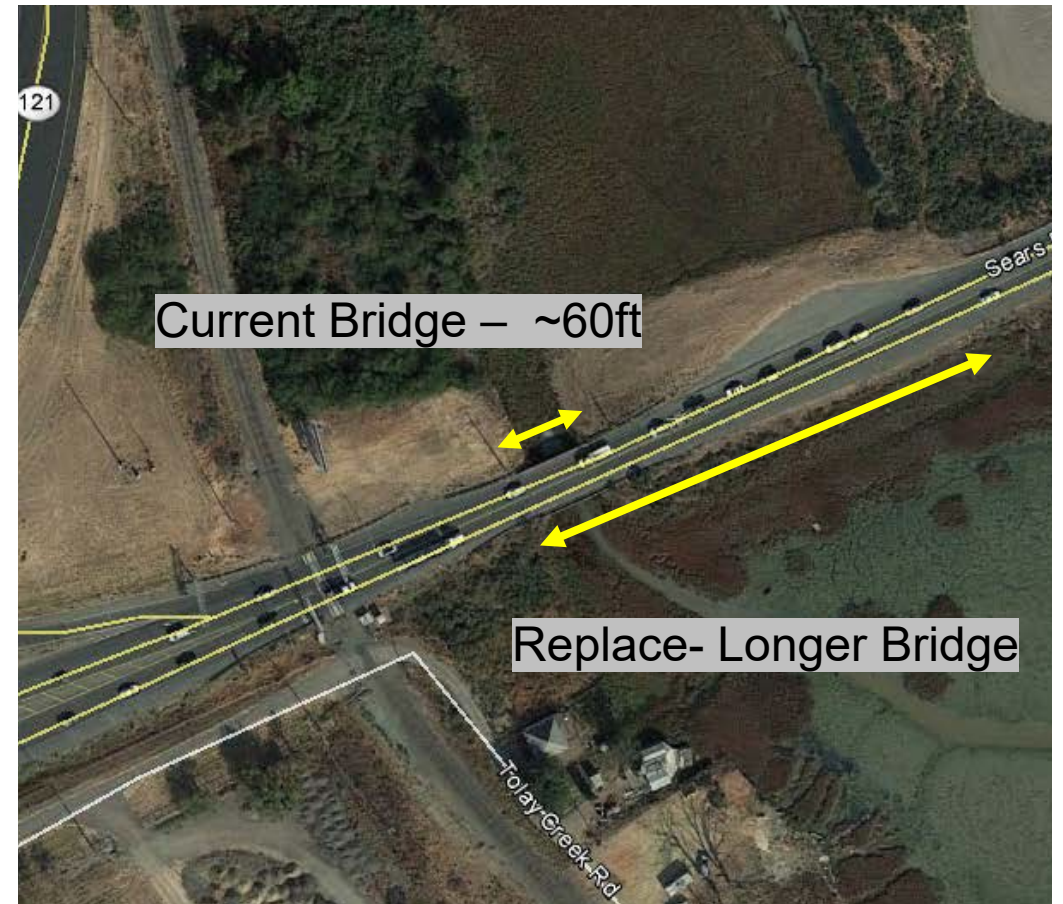


Transportation & Ecological Resilience Phased Adaptation Strategy

Strip Marsh East



Tolay Creek



Public Outreach to Date

State Route 37 Policy Committee Public Meetings

- On-Going Public Meetings Since 2015 (Occurs Approximately Every Quarter)
- Elected Officials from Sonoma, Marin, Napa and Solano Counties
- Supported by Executive Directors from MTC/BAIFA, Caltrans, STA, SCTA, TAM and NVTA

Public Outreach in 2017 – 2018

- Open Houses, Online Survey, Focused Group Meetings
- Tolling on SR 37 Was Discussed

SR 37 Sears Point to Mare Island Improvement Project EIR/EA

- Public Scoping Meeting- July 9 and Aug 24, 2020
- Public Meeting on Draft EIR/EA- Feb 2, 2022
- Public Comments Received on Draft EIR/EA- Jan 13- Feb 28, 2022
- Proposed Tolling on SR 37 Was Included and Evaluated in the EIR/EA
- Final EIR/EA- Approved Feb 8, 2023



RESILIENTSR37

MARIN • SONOMA • NAPA • SOLANO



Thank you!

