



**Placer County
Transportation
Planning Agency**

Welcome to Placer County

California Transportation Commission

January 25, 2023

Matt Click, AICP
Executive Director
mclick@pctpa.net



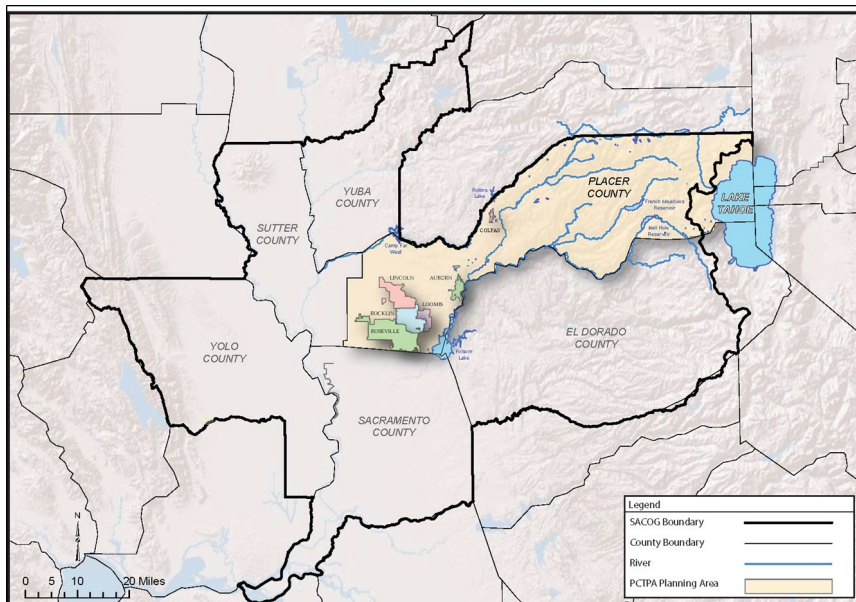
Indigenous History in Placer

- 7,000-year history of Maidu Indians in Placer County
- Maidu and Miwok Indians, later known as Auburn Band
- 1917 – U.S. established Auburn Rancheria for the Auburn Band in Placer County
- 1953 – U.S. terminated federal trust responsibilities for Rancheria
- 1967 – U.S. terminated federal recognition of the Auburn Band
- 1970s – changes in federal policy
- 1991 – Auburn Band reorganized as the United Auburn Indian Community (UAIC)
- 1994 – U.S. Congress passed Auburn Indian Restoration Act



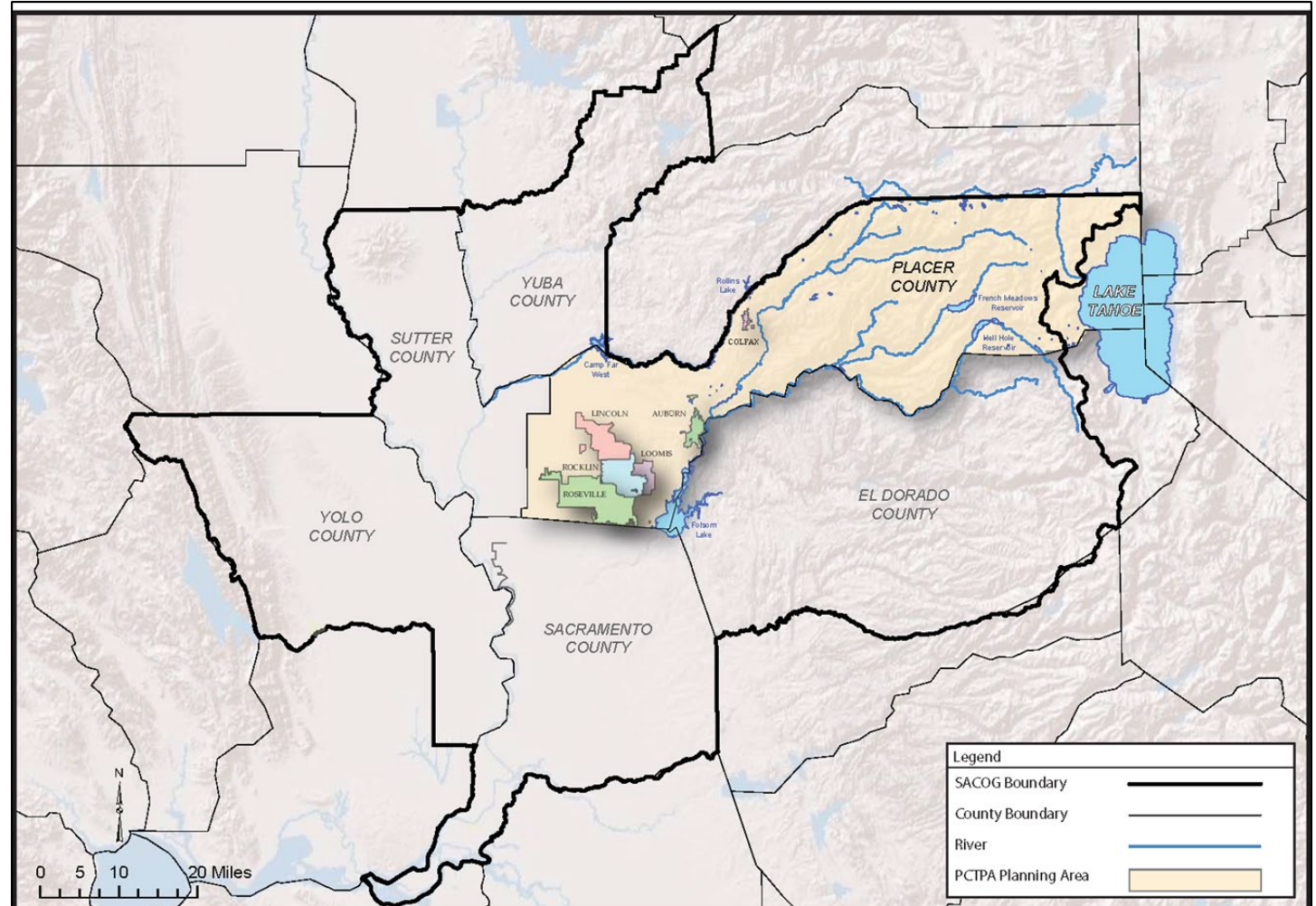
Welcome to Placer County

- We have six incorporated cities
- 1,506 square miles
 - 40% is federal
- Range in elevation from 160 ft. to nearly 9,500 ft.
- Part of the six-county Sacramento region



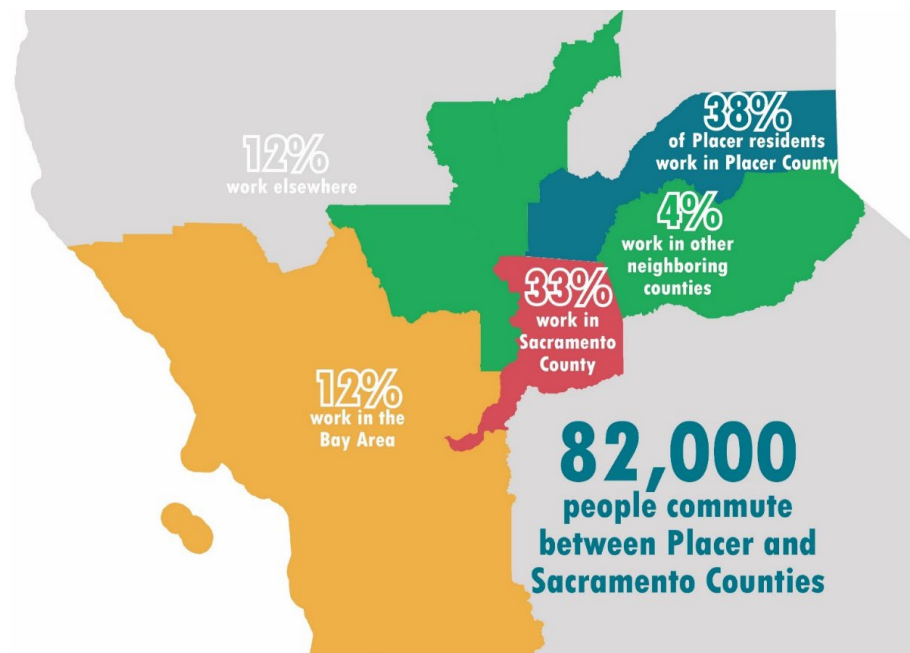
Placer County Economically

- Western Placer - Suburban
 - Banking
 - Insurance
 - Healthcare
- Mid-Placer - Rural
 - Agricultural
- East Placer - Rural
 - Tourism
- Three distinct economies with unique transportation needs



Placer County Today

- 408,000 people
- Fastest growing county in California
- 62% of Placer residents commute to work outside of Placer County Today
 - 33% in Sacramento



Placer County Growth

Projected Growth (2050)

- Over 500,000 total population
- Over 63,000 new jobs
- Over 55,000 new homes



New Employers

- Penumbra
- McKesson
- Adventist Health HQ
- Kaiser
- Sutter Health
- Amazon Hub

Who is PCTPA & What do we do?

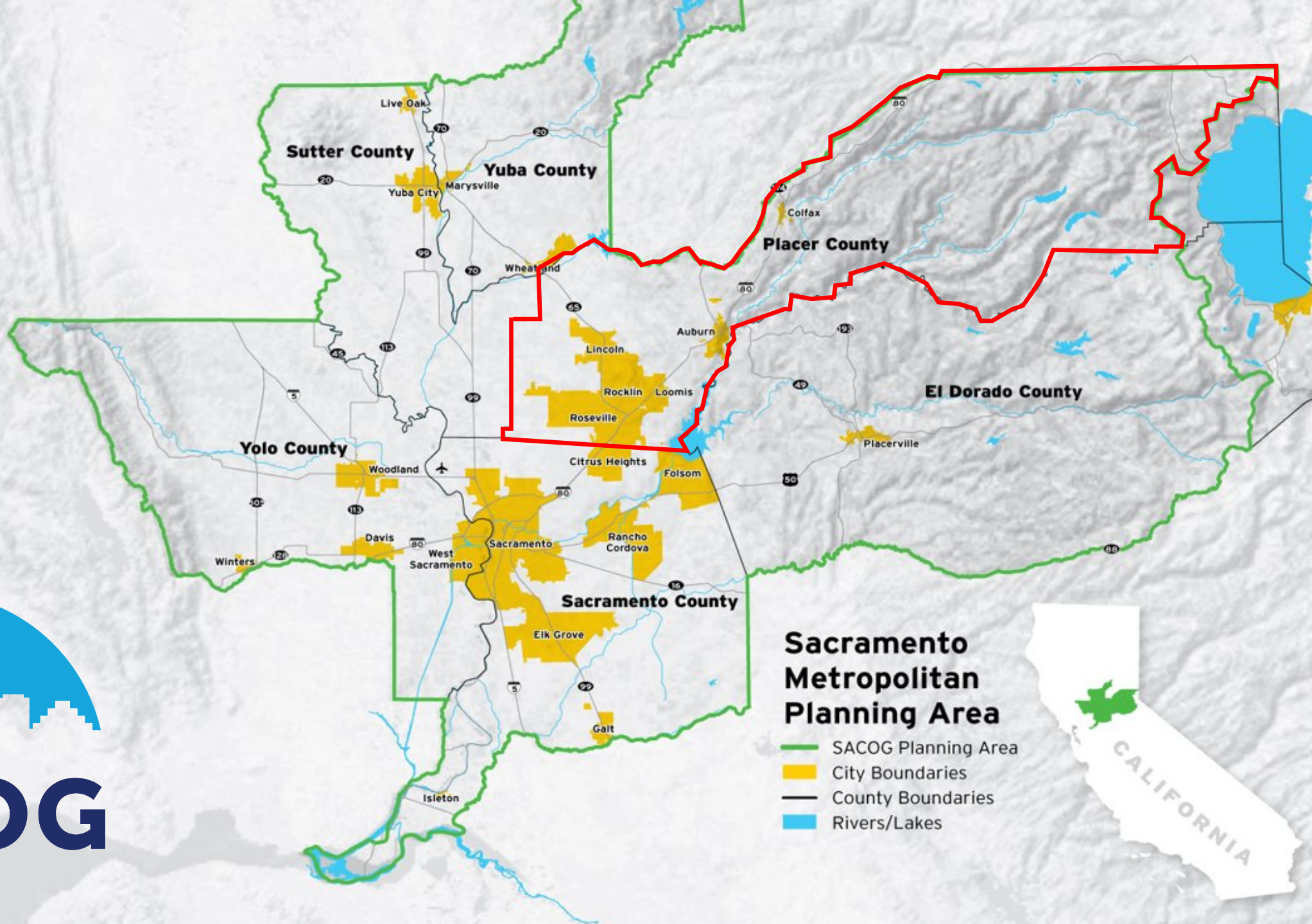
Regional Transportation Planning Agency (RTPA) for Placer County

1. Lead transportation and transit planning
2. Help our jurisdictions obtain state and federal funding
3. Coordinate transportation planning with regional, state and federal efforts



Who are our partners?







METROPOLITAN TRANSPORTATION COMMISSION



SACOG
Sacramento to Roseville
Third Main Track - Phase 1

SACOG
I-5 Managed Lanes -
Sutterville Road to Yolo County Line

SACOG
Yolo I-80 and US 50 Managed Lanes

Sacramento

SACOG
Valley Rail Program includes
expansion of both ACE and the
San Joaquins Services

MTC
I-80 Westbound Cordelia Commercial
Vehicle Enforcement Facility
(Truck Scales)



Stockton

MTC
Port of Oakland Community Impact
Reduction: Roundhouse Truck EV Charging
Infrastructure and Truck Parking

SJCOG
Passenger Rail Improvements

SJCOG
Interstate 205 Managed Lanes Project

SJCOG
State Route 99/120 Interchange
Project (Phase 1A & 1B)

San Francisco

MTC
Valley Link Buildout

SJCOG
Central Valley Gateway Project

MTC
Capitol Corridor: South Bay Connect

MEGA REGION

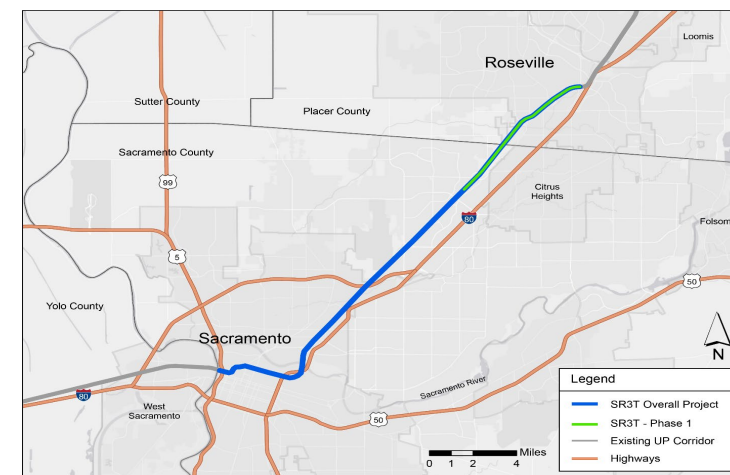
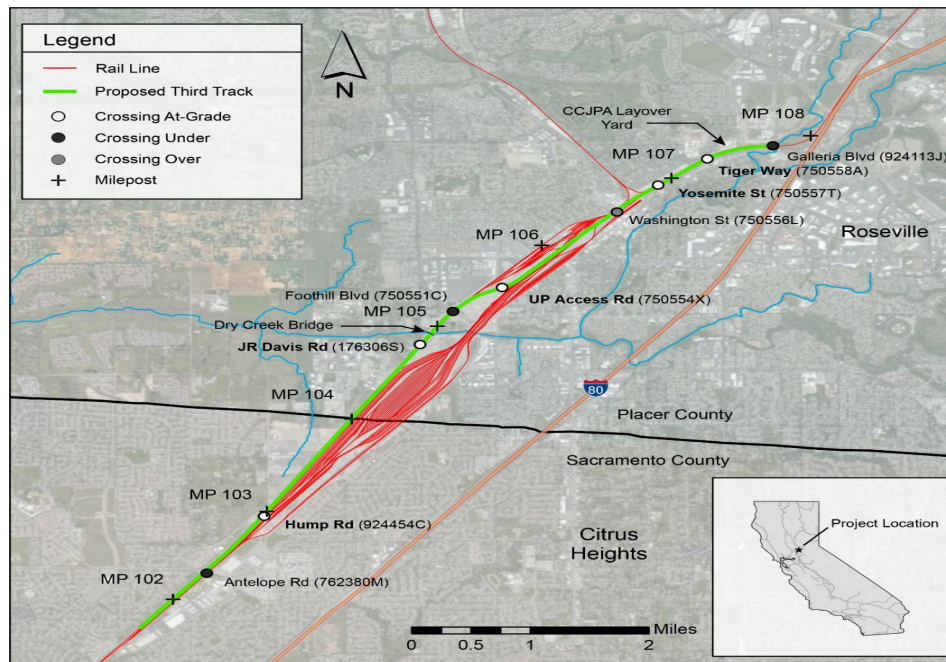
NORTHERN CALIFORNIA
WORKING GROUP

CCJPA SR3T – Phase 1



What is it?

- **Construction of 6.75 miles of mainline tracks**, and
 - Railroad signal improvements
 - Track crossovers
 - New layover servicing facility for train cars
- **Service expansion** between Roseville and Sacramento from one round trip daily **to three round trips daily**
- **Future** phases will allow **expansion** of this service **to ten round trips daily**

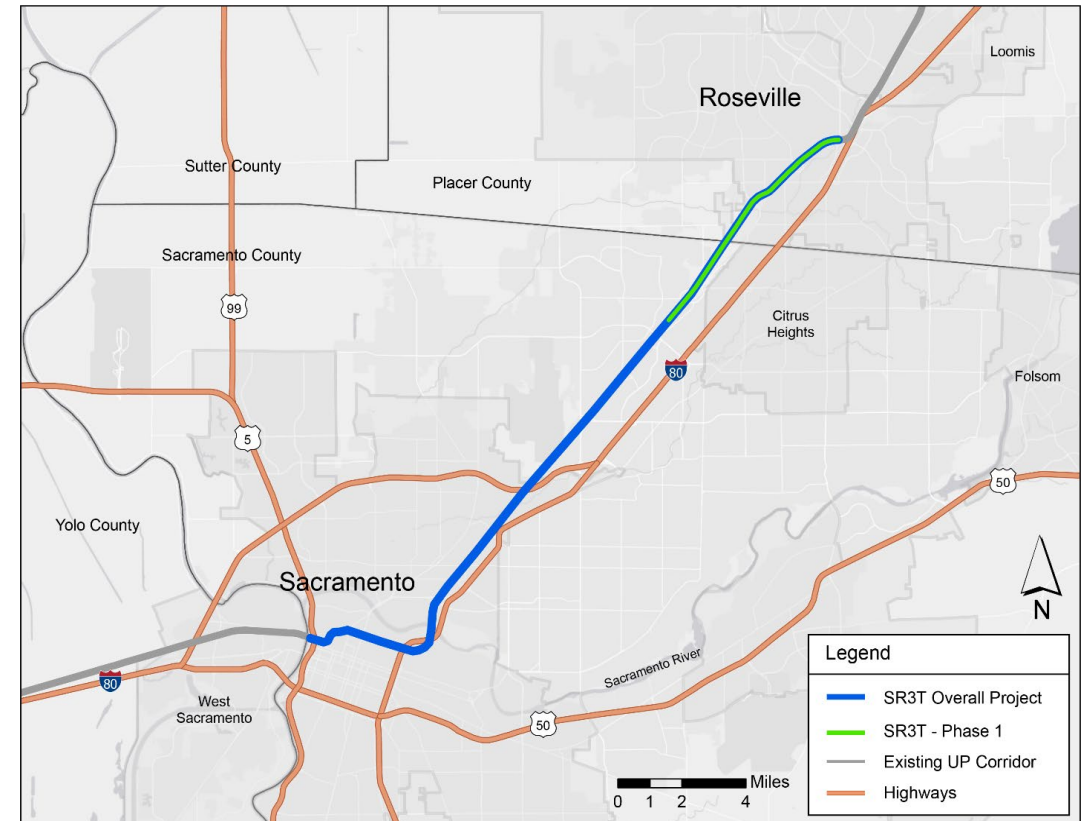


CCJPA SR3T – Phase 1



Why is it important?

- **Strengthens intercity rail connection** with the fastest growing county in California
- **Enhances intercity passenger rail and freight efficiency** by mitigating delays with infrastructural track changes
- **Helps with traffic congestion** on I-80 and local streets
- **Improves regional air quality** by reducing auto emissions and reduced greenhouse gas emissions
- **Supports regional and local land use plans**, which include construction of transit-oriented developments





**Placer County
Transportation
Planning Agency**

Thank You

California Transportation Commission

January 25, 2023

Matt Click, AICP
Executive Director
mclick@pctpa.net