



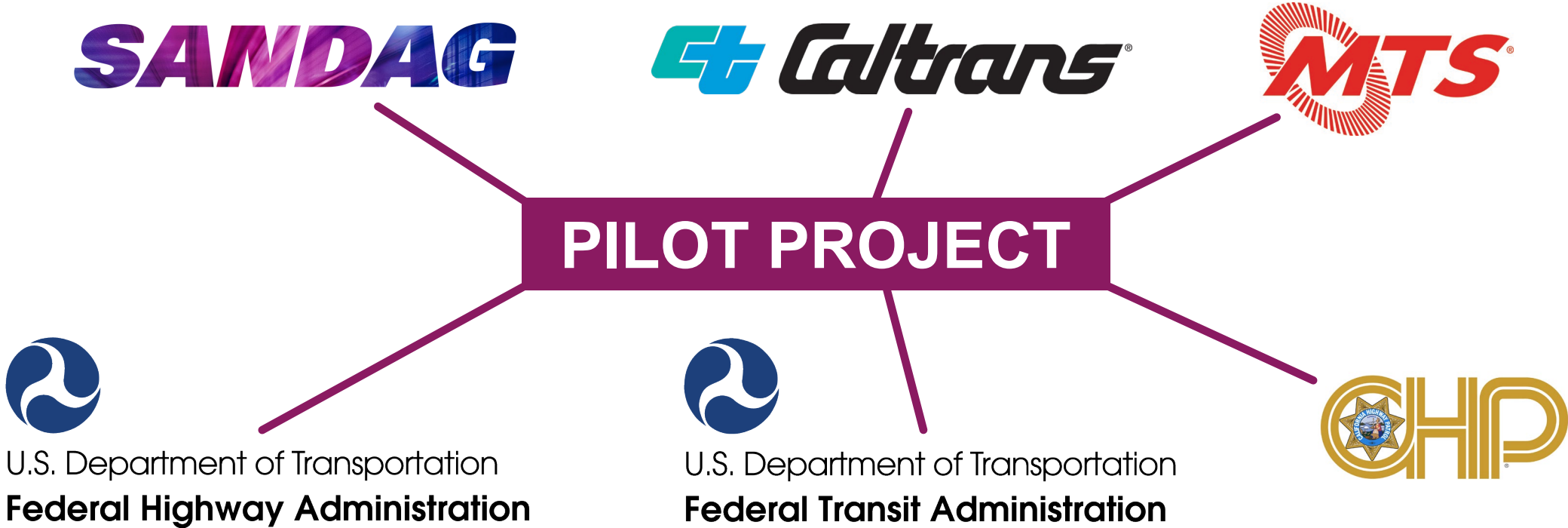
Tab 17

San Diego Part-time Transit Only Lanes Pilot

Interstate-805 / State Route 94

California Transportation Commission
October 12, 2022

Collaboration: Multiple Agencies



Need: Part-Time Transit Only Lanes

- Reliability
- Safety
- Enforcement
- Maintenance
- Technology
- Operational feasibility.



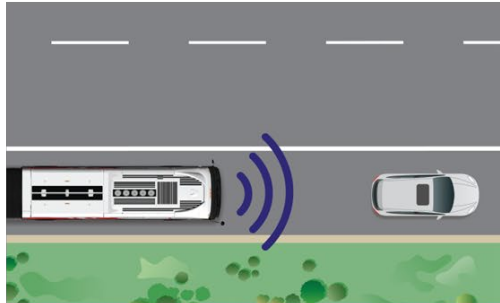
Location: MTS South Bay Rapid 225



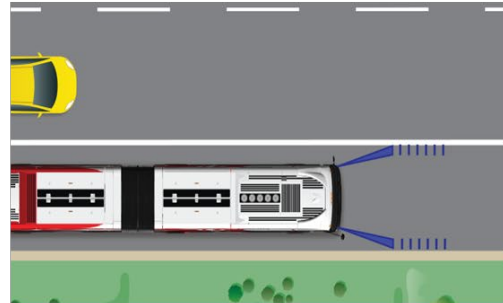
Monday to Friday
Mornings: 6am - 9am
Evenings: 3pm - 7pm

Operations: Safety First

Forward Collision Warning



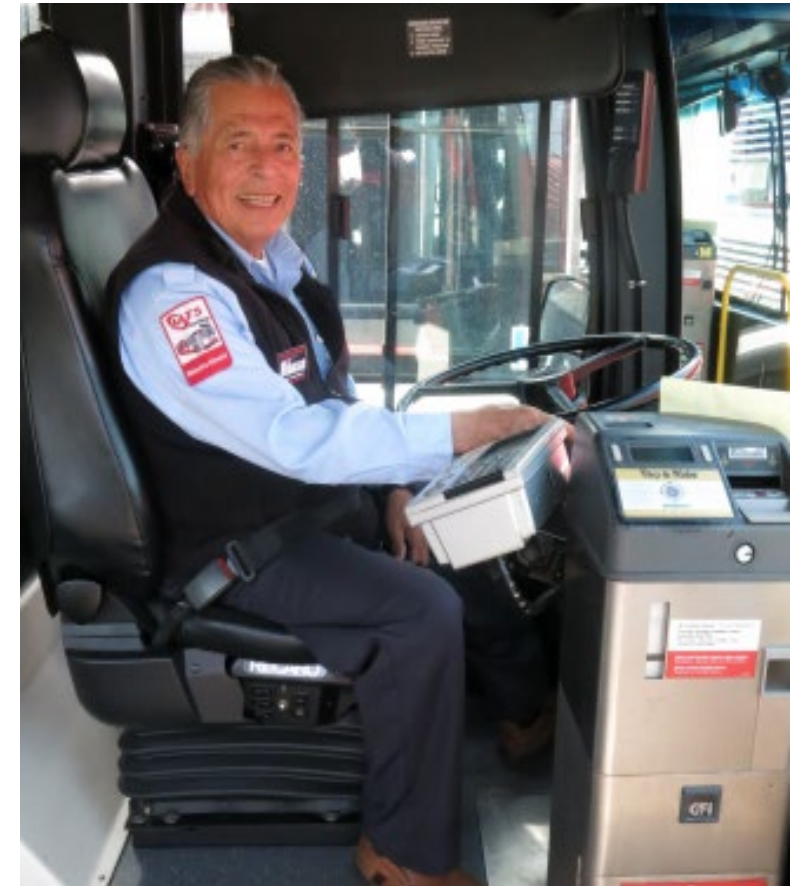
Lane Departure Warning



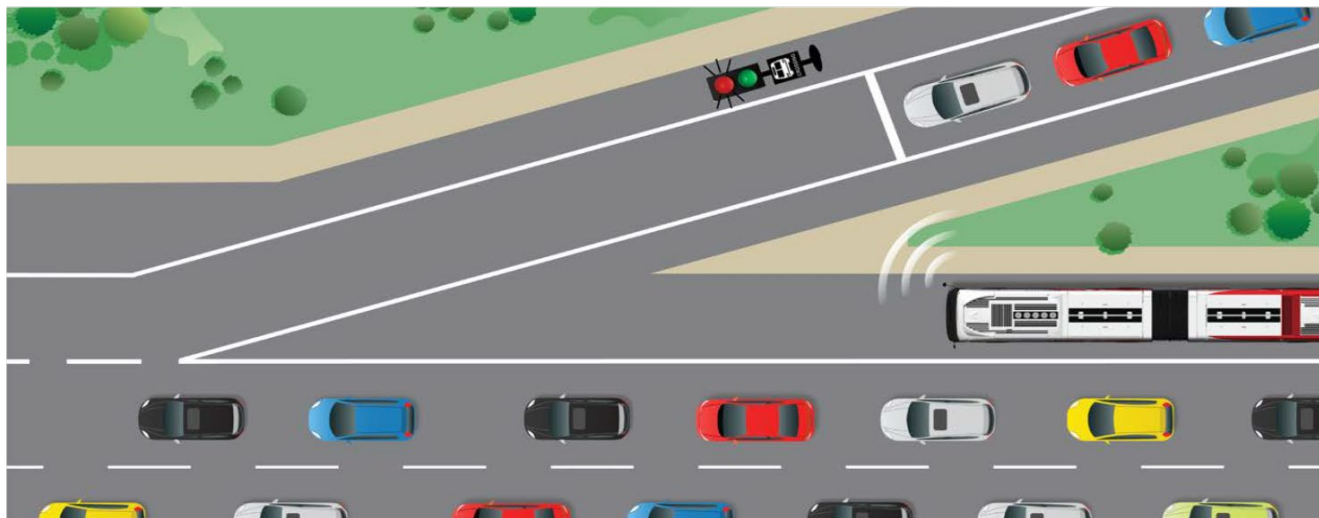
Blind Spot Warning



Trained Workforce

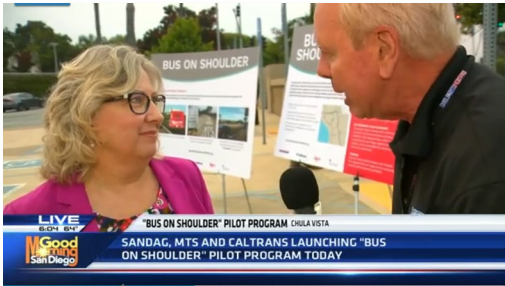


Ramp Metering Transit Priority System

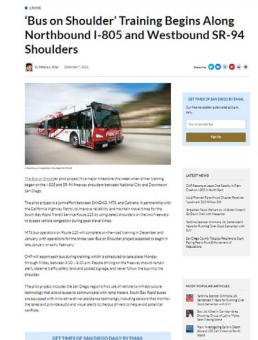


Outreach: Raising Public Awareness

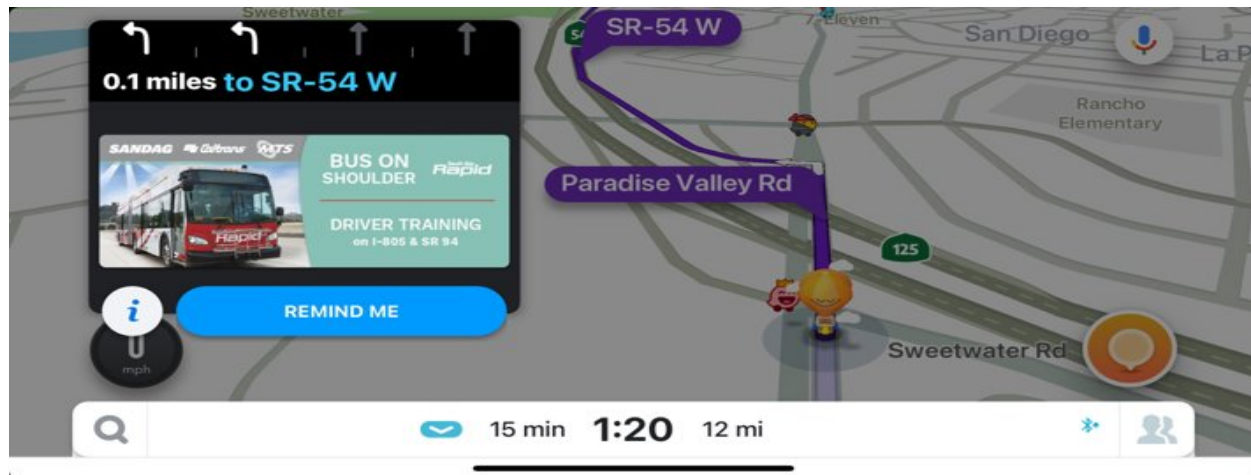
Media



Print



Waze



Facebook



Evaluation: Phase I

0 incidents involving a *Rapid vehicle* on a TOL over last **90** days



2,069

Total
Rapid 225 Trips



343

TOL Trips



320

Transit Signal
Priority (TSP)



17%

Utilization Range

Stay connected with SANDAG

 Explore our website
SANDAG.org

 Follow us on social media:
[@SANDAGregion](#) [@SANDAG](#)

 Email:
peter.thompson@sandag.org

SANDAG