



Tab 15

# CALTRANS TRANSPORTATION EQUITY INDEX

---

OCTOBER 2022 – CALIFORNIA TRANSPORTATION COMMISSION

TONY DANG, AICP

DEPUTY DIRECTOR FOR SUSTAINABILITY



# IMPETUS FOR EQUITY INDEX (EQI)

---

- Operationalizes Caltrans Equity Statement
- Delivers Action S3.4 under the Climate Action Plan for Transportation Infrastructure (CAPTI)
- Meets statutory obligations for developing data-driven definition for underserved communities under the Reconnecting Communities: Highways to Boulevards Pilot Program (Cal. Sts. & Hy. Code § 104.3)

# EQI APPROACH

---

- Granularity
- Limited Set of Transportation-Specific Indicators
- Spatially-Significant Indicators
- Nexus Between EQI Indicators and Transportation Project Scoping, Design, and Evaluation

# DATA AND INDICATORS

---

- Demographic Overlay
  - Household income; race and ethnicity data
- Traffic Exposure Indicator
  - Traffic proximity and volume, crash exposure data
- Access to Destinations Indicator
  - Ratio of multimodal access (transit and walking) to auto access

# EQI SCREENS

## Demographic Overlay

## Transportation Indicators

## EQI Screens

Demographic  
Overlay



Traffic Proximity and Volume  
OR Crash Exposure

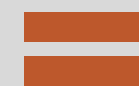


Traffic Exposure  
Screen

Demographic  
Overlay



Access to Destinations



Access to Destinations  
Screen

Demographic  
Overlay



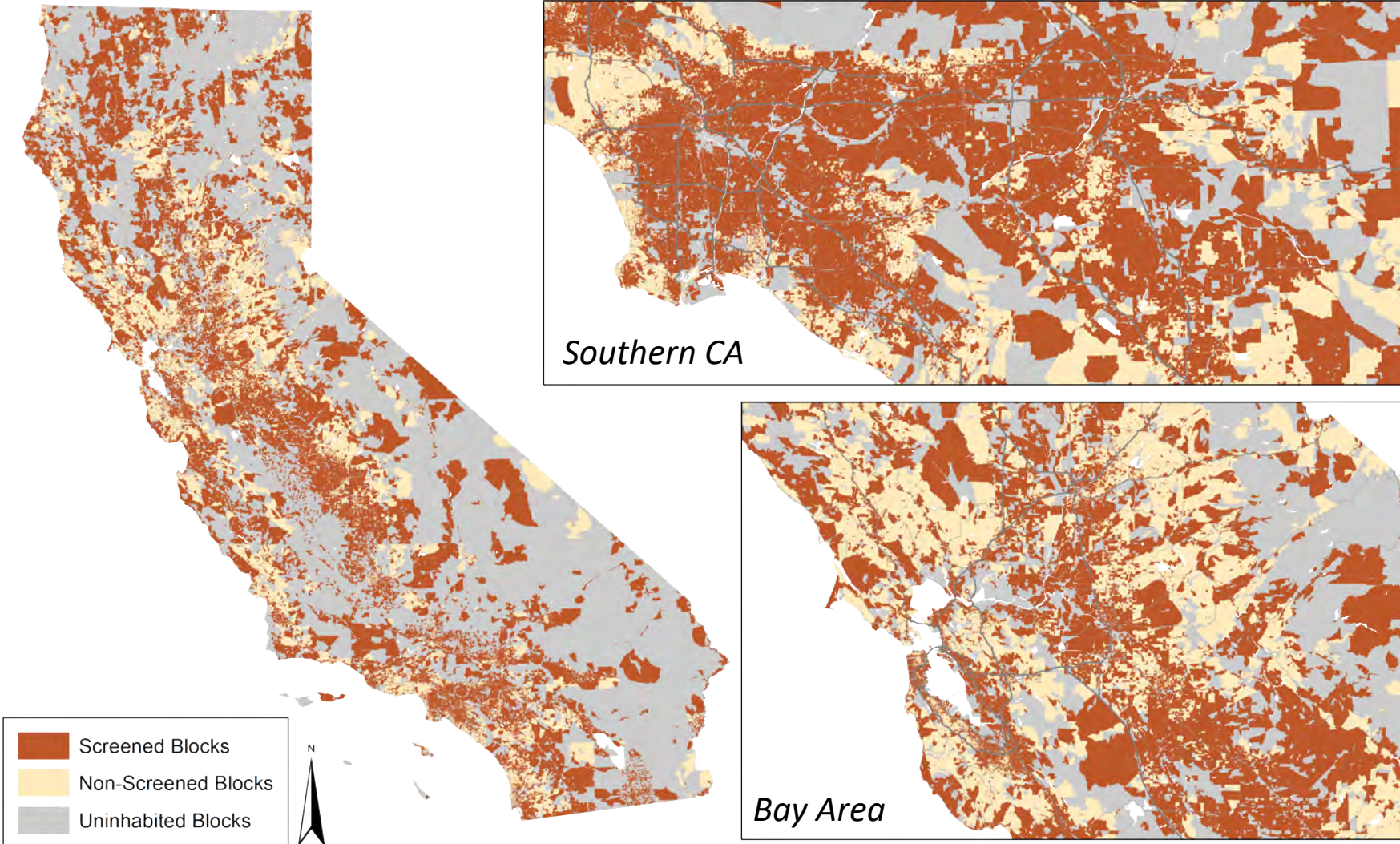
Traffic Proximity and Volume  
OR Crash Exposure AND  
Access to Destinations



Priority Populations  
Screen

# Demographic Overlay

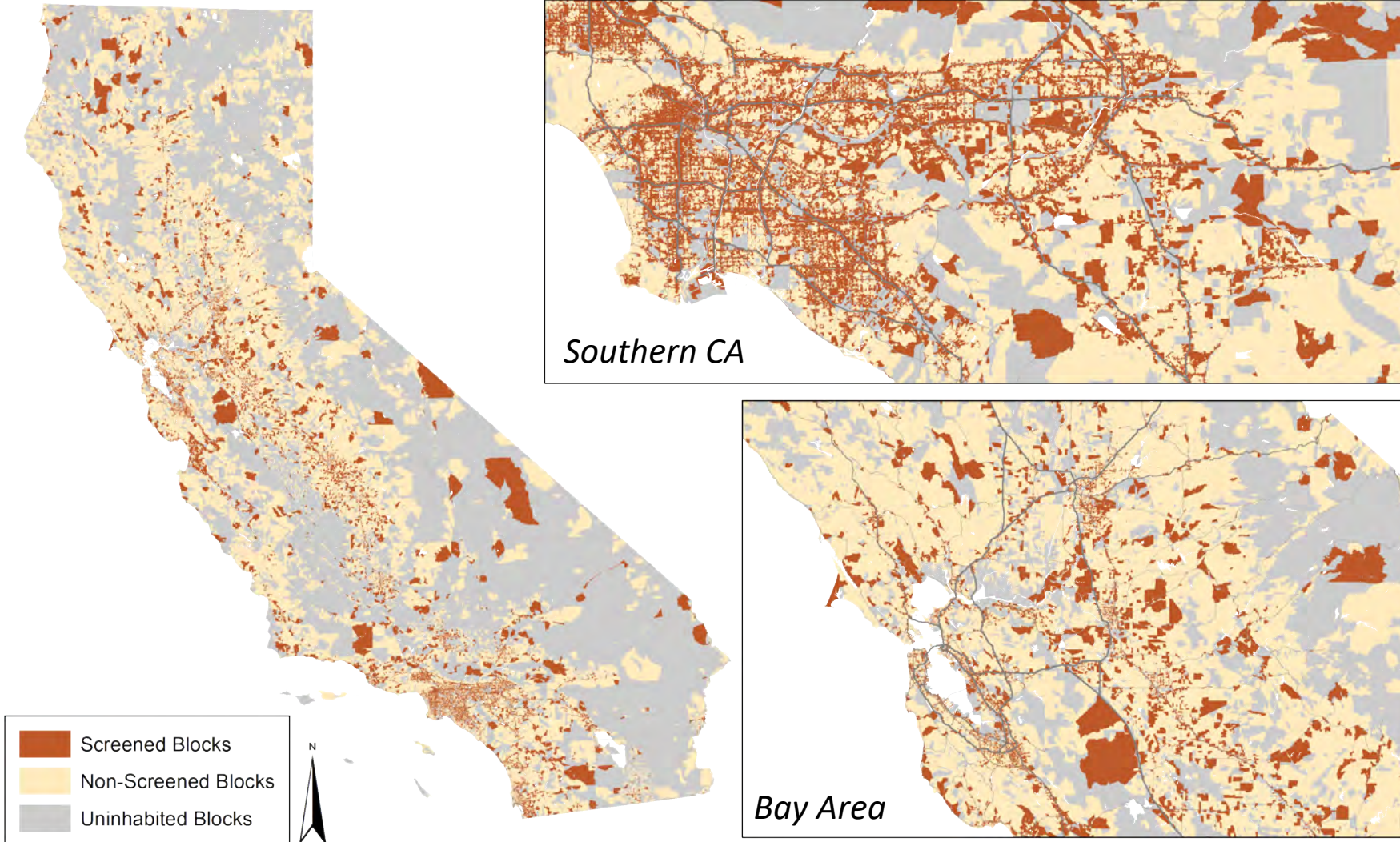
Total Population Coverage: 79%



Household  
Income  
OR  
Race/Ethnicity

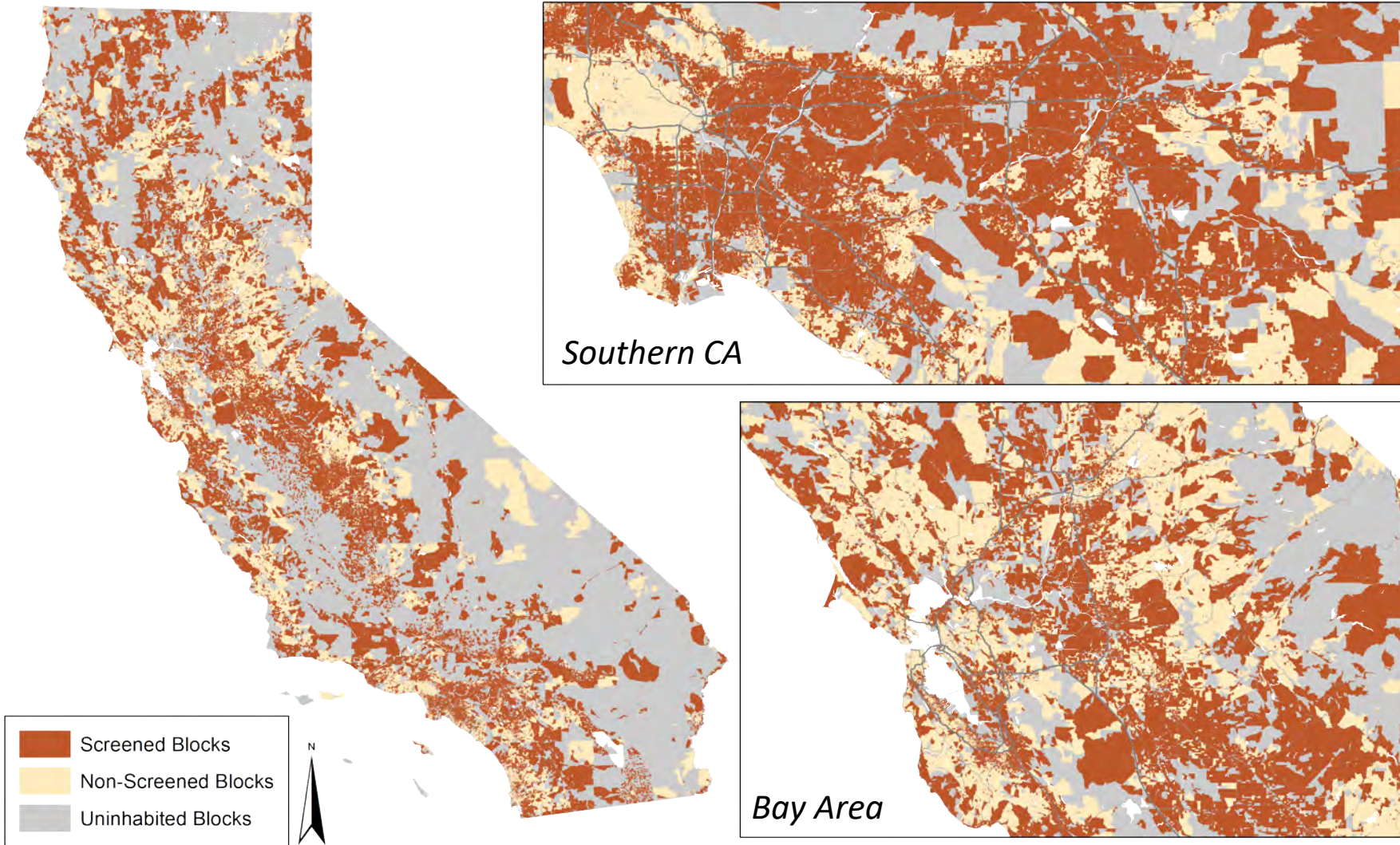
# Traffic Exposure Screen

Total Population Coverage: 33%



# Access to Destinations Screen

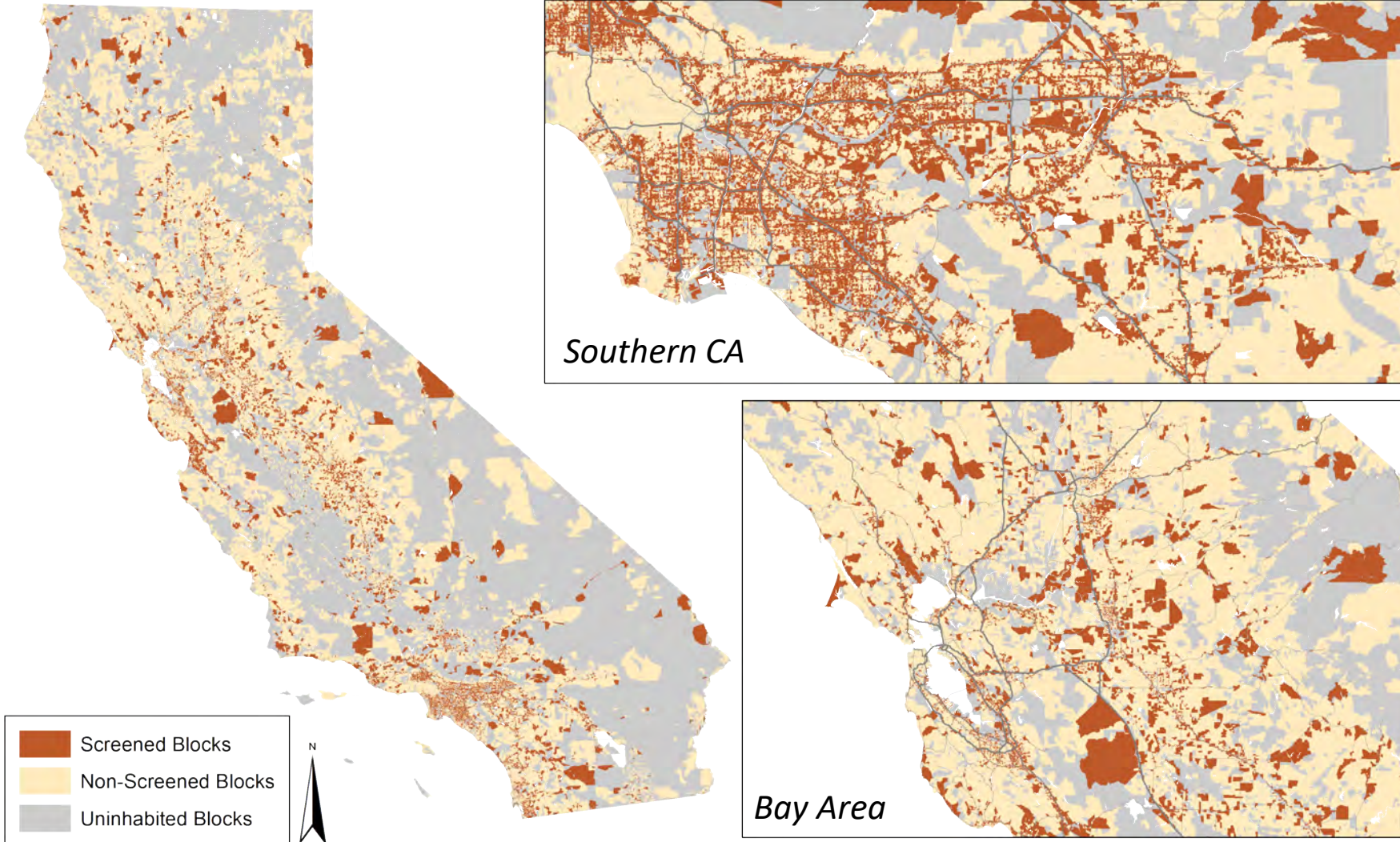
Total Population Coverage: **67%**





# Priority Populations Screen

Total Population Coverage: **27%**





# NEXT STEPS

---

- Public Stakeholder Survey, closes 10/31/2022:  
<https://forms.office.com/g/BpmuNtfQnp>
- Information Session #2 and Beta EQI Release – December 2022
- Stakeholder Listening Sessions – early 2023

Caltrans EQI EMAIL:

[CaltransEQI@dot.ca.gov](mailto:CaltransEQI@dot.ca.gov)

Website:

<https://dot.ca.gov/programs/planning-modal/race-equity/eqi>