

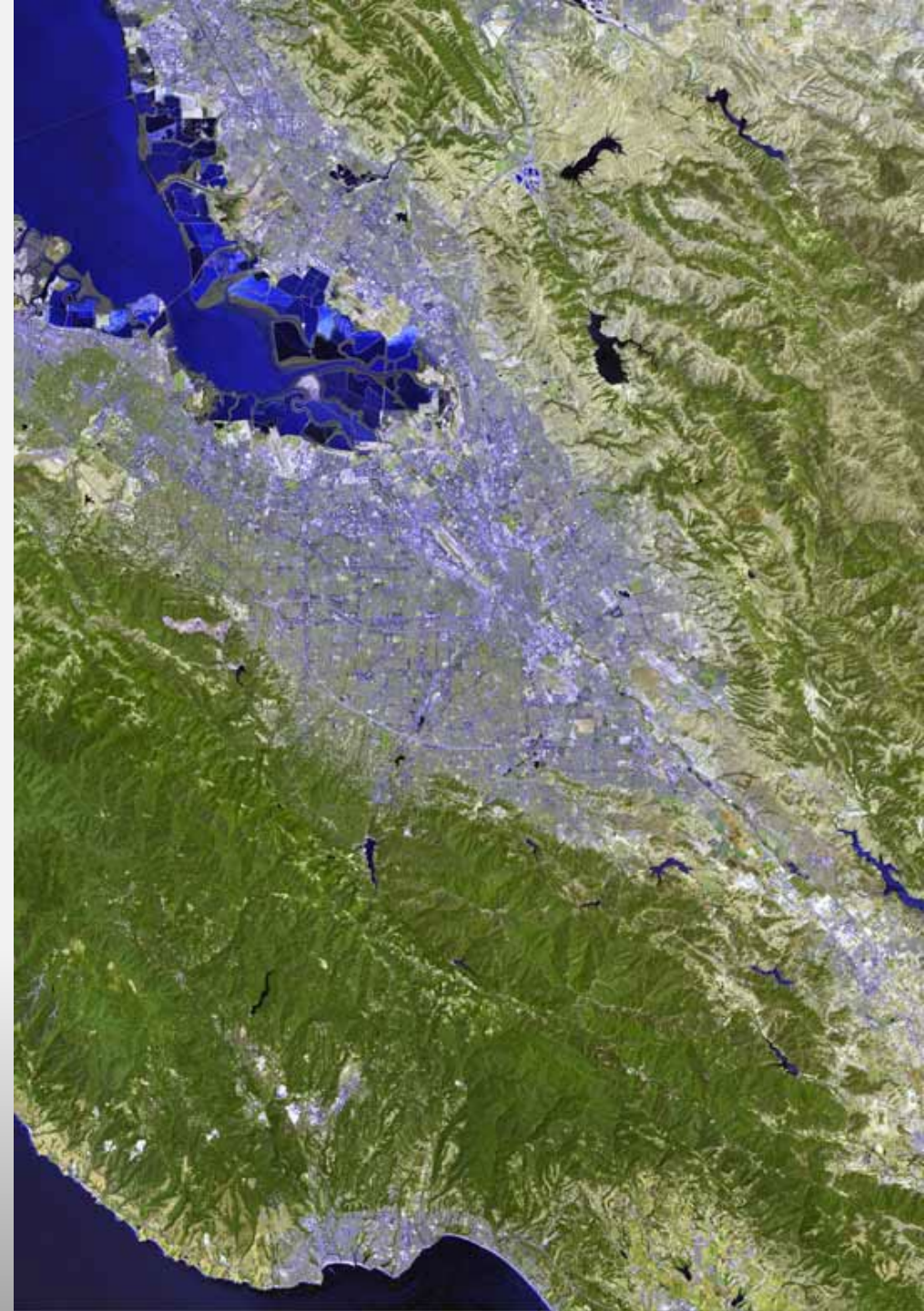
Welcome to the Bay Area Region

California Transportation Commission
Mayor Sam Liccardo, MTC Commissioner
Therese McMillan, Executive Director
San José, CA
August 17, 2022



Overview of the Bay Area and San Jose

- San Francisco Bay Area Region
 - Nine Counties
 - 7.7 million residents
- City of San Jose
 - Largest city in Northern California with one million residents
 - Major employment hub and economic driver of Silicon Valley



Plan Bay Area 2050

- Bay Area's RTP/SCS, adopted Fall 2021
- Key areas include Transportation Issues and Investments, matched with Housing, Resiliency, and Adaptation Concerns
- Strong focus on implementation:
 - Transit Project Investments
 - Express Lanes Improvements
 - Policy Updates
 - Transit Oriented Communities Policy
 - Active Transportation w/Complete Streets
 - Safety & Vision Zero
 - Equity
- Alignment with State Policies, including CAPTI



Plan Bay Area 2050 Alignment with CAPTI & SB1 Programs

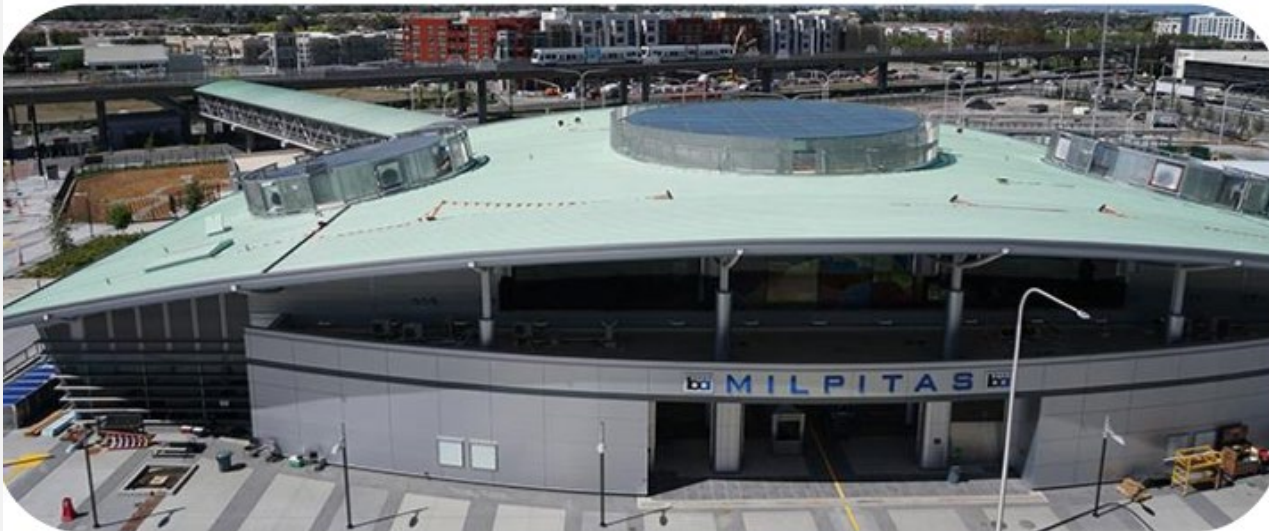
- Plan Bay Area 2050 reflects a shared vision — one that cannot be implemented by any single organization or government agency. Only through partnership with the public and private sectors.
- PBA50 Vision and strategies support the 10 CAPTI guiding principles to combat climate change
- MTC has long worked to reduce the region's environmental footprint and protect residents from environmental impacts.
- MTC actively working with stakeholders to develop funding prioritization principles and strategies that align with SB1 programs.



Near-Term Transit Projects

- BART Extension to Silicon Valley
- Zero Emissions / Electrification
 - Transit Fleet
 - Support transition to EVs

Images: BART Extension to Silicon Valley



Express Lanes Focus

- Bay Area Express Lanes Strategic Plan: adopted in 2021, the plan aligns purpose, goals, and strategies of the Express Lanes network with MTC's other regional priorities in Plan Bay Area 2050.
 - Completion of the express lane network will provide more efficient roadways, seamless and reliable bus service, dynamic toll pricing, and creates more revenue streams for other transportation and corridor improvements



Policy: Transit-Oriented Communities

- Goal: Create communities around transit stations/ along transit corridors that support transit and promote diversity, equity, and access to services
- Planned adoption in Fall, 2022; Will implement key elements of PBA2050
- TOC Policy will:
 - Increase residential and commercial densities in transit rich areas
 - Prioritize bus transit, active transportation, and shared mobility within and to/from transit rich areas, especially to Equity Priority Communities (EPCs)
 - Support partnerships to create equitable TOCs



Policies: Complete Streets, Active Transportation, Vision Zero

- Complete Streets Policy: requires all regionally-funded projects consider the accommodation of people who walk, bike, and roll.
- Regional Active Transportation Plan: guides investments in infrastructure, regional policy development, and implementation.
- Vision Zero Policy: Strategy to work with agencies to support actions towards eliminating traffic deaths and injuries by 2030



Focus on Equity: Mobility Improvements for All

- MTC Equity Platform: is based on a commitment to meaningfully reverse disparities in access and dismantle systemic exclusion.
- Clipper Start Fare Discount Program:
 - provides single-ride transit fare discounts for eligible low-income individuals in the region
- FasTrak START Pilot Program
 - Express Lanes tolling discounts for low-income drivers
- Bike Share For All:
 - Reduced Cost Membership
- Toll Violation Penalty Reductions



Thank you

Walk safe
Bike safe
Drive safe



**Vision Zero
San Jose**

To eliminate all
traffic deaths

www.visionzerosj.org

 Valley Transportation Authority

 CITY OF SAN JOSE
CAPITAL OF SILICON VALLEY

 BAY AREA AIR QUALITY
MANAGEMENT DISTRICT

