



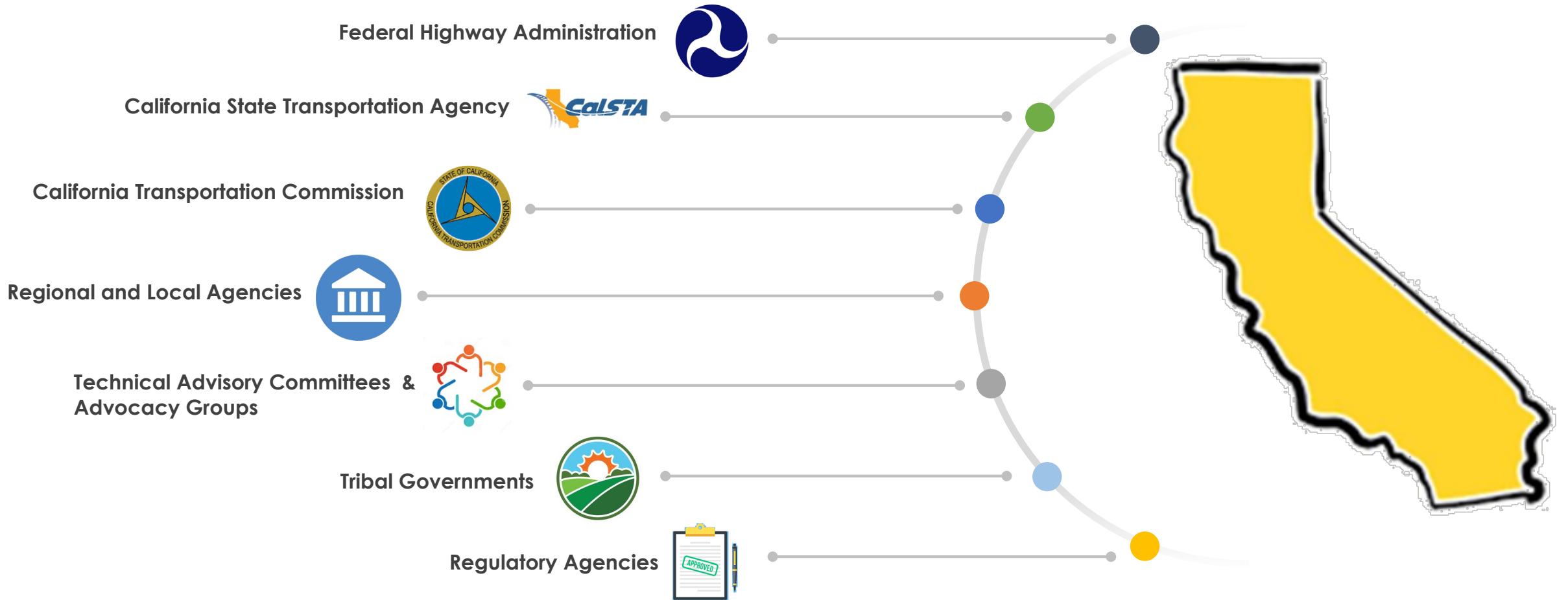
Local Assistance Program Stewardship and Oversight

California Transportation Commission
March 2021



Local Assistance Program Mission

Helping our partners deliver local transportation projects that enrich our communities





Local Assistance Program Scope



Federal Highway Administration



 **\$2.5 Billion Annualized**
30 Programs

FEDERAL PROGRAMS & AUGMENTATION FUNDS

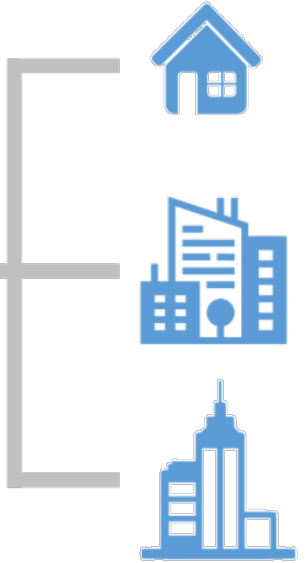
STATE PROGRAMS

\$13.6 Billion
4000 Active Projects

Local Assistance Program
HQ & Districts

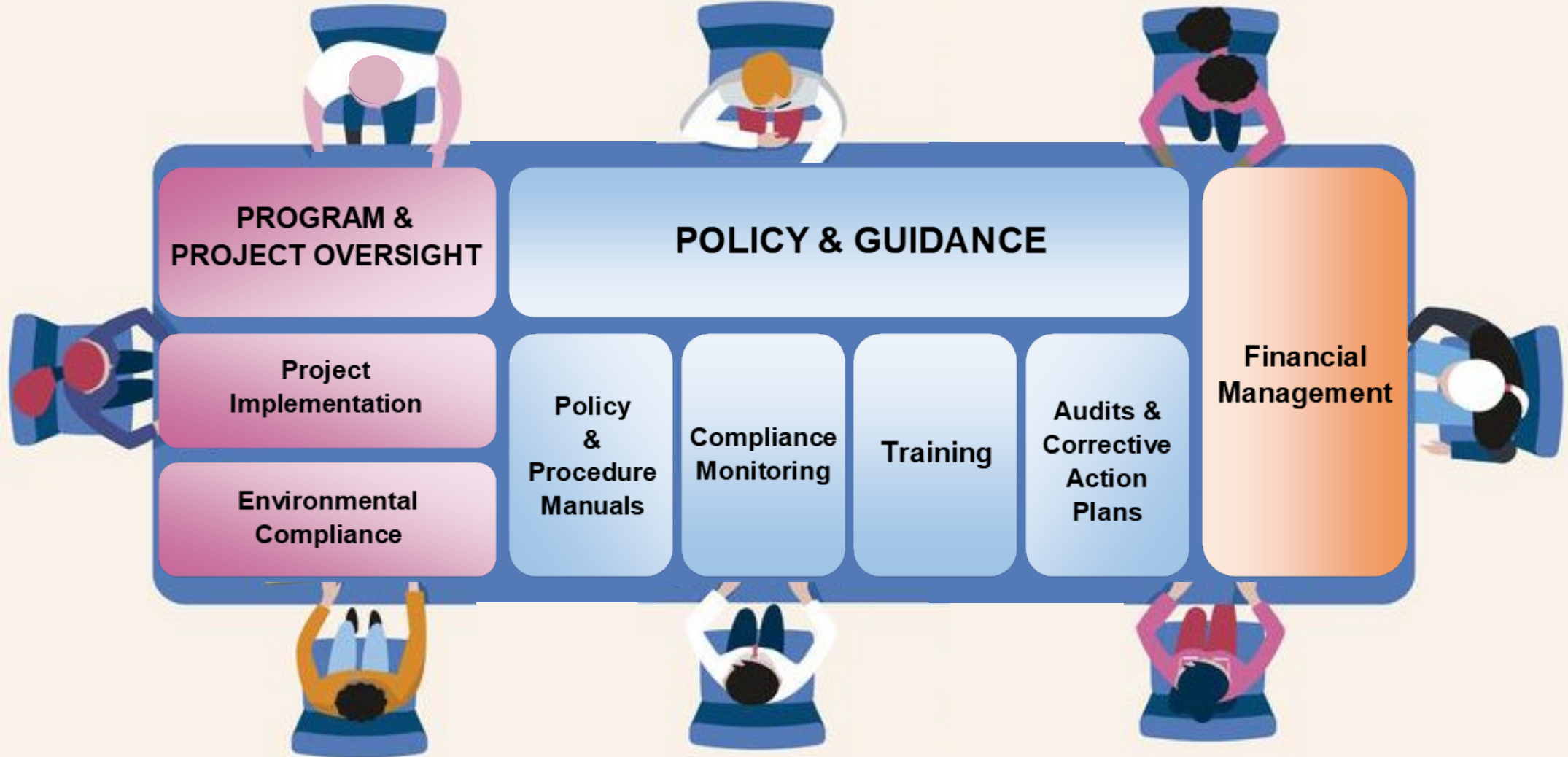


650 Local Agencies





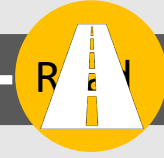
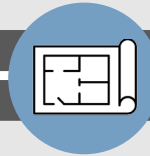
Local Assistance Program Management





Local Assistance Program Project Delivery Oversight & Compliance

13,000 Project Delivery
Actions Annually



Programming

- Call for Projects
- Evaluations & Project Selection
- Program Data Management & Monitoring
- Interfacing with recipient local agencies
- FTIP/FSTIP review
- Agency qualification – Master Agreement (MA)

PA&ED

- Verification of MA
- Allocation / Authorization Requests
- Federal Requirements
- Invoicing / Reimbursements

PS&E / RW

- Verification of MA
- Allocation / Authorization Requests
- Completion of Environmental Document
- Federal Requirements
- Invoicing / Reimbursements

Construction

- Verification of MA
- Allocation / Authorization Requests
- Completion of Environmental Document
- Completion of PS&E
- Completion of RW Cert
- Federal Requirements
- Invoicing / Reimbursements

Closeout

- Walkthroughs
- Civil Rights Compliance
- Final Report of Expenditures / Invoice
- Audits & Corrective Action Plans



Local Assistance Program Alignment and Improvements

SAFETY



- Fund projects to increase safety for bike/ped/motoring public
- Provide training on safety for all modes of transportation

MODALITY



- Develop a systematic approach to capture performance including safety & modality
- Provide training on complete streets, bicycle facility planning and design, and more

INNOVATION



- Improve data quality and upgrading systems
- Develop project tracking tool for agencies

EFFICIENCY



- Advance program policy reforms
- Implement risk based stewardship and oversight
- Streamline process & procedures continuously and collaboratively

PARTNERSHIPS



- Strengthen relationships with internal and external partners
- Increase engagement and outreach opportunities



Thank You



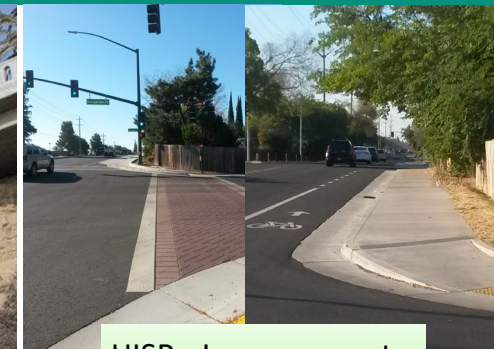
HBP - Donner Lake



HBP - Main Street Bridge



HBP - CA-Incline



HISP - Improvements



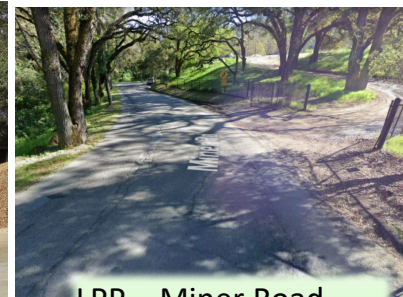
ATP - Bike Rodeo



HBP - Donner Lake



LPP - Miner Road
Before and After



LPP - Burns Valley,
Before and After



ER - Carlsbad Blvd



ER - Shelter Cove



ER - Lone Pine Rd



Dee Lam
Division Chief
dee.lam@dot.ca.gov