

Homelessness in a Transportation Environment: Caltrans

John Oliva

Statewide Encampment Manager



An Integrated Approach Prioritizing Safety & Relocation Solutions with Local Partners

- Caltrans must protect its enterprise mission to provide a safe transportation network that serves the fifth largest economy in the world.
- Caltrans has developed a preliminary risk-based system for prioritizing encampments allowing Caltrans to balance competing public health and safety demands.

How do we protect public safety, balance mounting public concerns, while abiding by the CDC guidelines?

By refining our focus:

- Safety
- Equity
- Mitigation
- Locally-driven, effective solutions that end the unsheltered status of local constituents



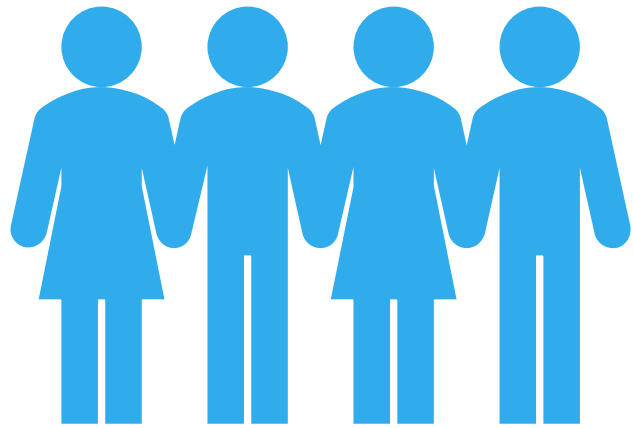
Caltrans' Interim Guidance on Encampments

- Developed in response to the COVID-19 Pandemic
- Identifies and distinguishes the roles of Caltrans and partners including experts on homelessness and public safety
- Distinguishes encampments by priority (safety threat) level using an enterprise risk management methodology
- Focuses on the locally driven and supported solutions on homelessness
- Lays the foundation for Caltrans' future policies and practices in response to homelessness



How's it going?

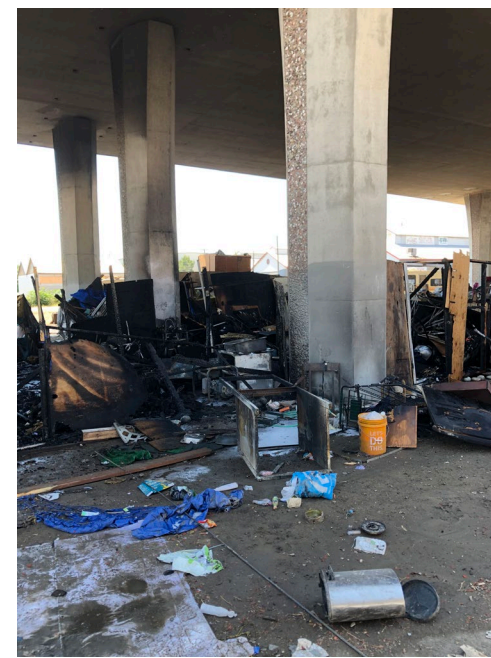
- Key challenges
- + hope for a different future



Ongoing + New Initiatives to Support California's Communities

Enterprise Risk Management Methodology

		IMPACT			
		Safety	People	Assets	Environment
SEVERITY	Low (Level 4)	Attempt Mitigation and Relocation			
	Moderate (Level 3)	Incorporate Risk-Reducing Measures			
	High (Level 2)	Prioritize Relocation			
	Critical (Level 1)	Relocation Required			



Level 1 – Critical Emergency Priority

Must be removed immediately upon discovery.



Level 2 High Priority

Coordinated removal with
outreach/relocation focus,
within a reasonable
timeframe





Level 3 – Moderate Priority

Monitor and mitigate where possible. The focus is on relocation solutions by local governments.

Level 4 – Low Priority

- Not a public safety concern in comparison to level 1-3 encampments.
- Mitigation where possible.
- Focus on relocation solutions with local partners.



JD Foster shared a post.
August 9 at 8:07 PM

If what you're doing isn't working, try something different

