

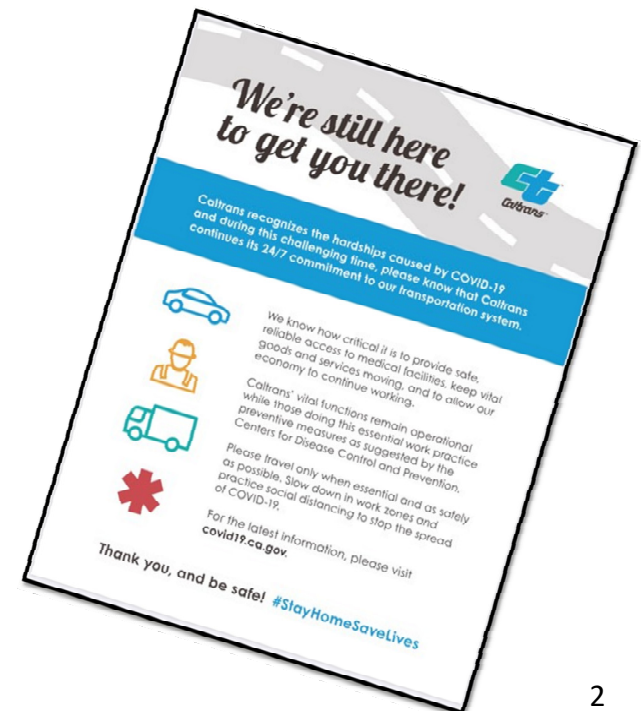


COVID-19 Update
Toks Omishakin

April 29, 2020

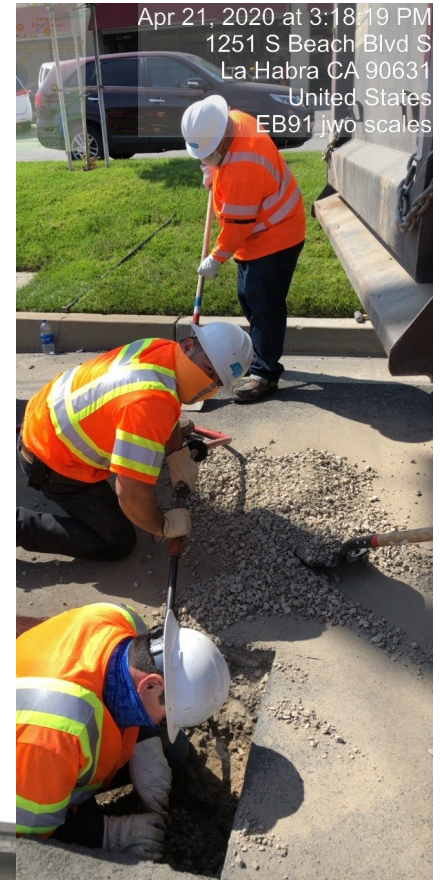
Essential Roles of Government

- Performing the Essential Roles of Government
 - Transportation and construction deemed essential functions during COVID-19 crisis
- Keeping our employees and the public safe
 - Field work ongoing
 - Construction continues
 - Telework
 - Work schedule changes
 - Social distancing



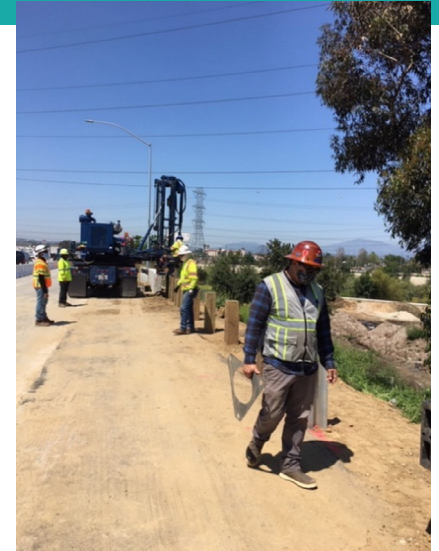
Maintenance

- Caltrans Maintenance Crews are on call 24/7 to ensure the transportation system remains fully operational for the flow of essential goods such as medical supplies and groceries
- Essential activities by Maintenance Crews:
 - Emergency traffic control for vehicle crashes
 - Potholes, pavement markings, signs and safety devices
 - Emergency repair of traffic signals and lighting
 - Cleaning and repair of drainage facilities
 - Snow removal and emergency convoys



Continuing Construction Activities

- Close coordination with construction industry partners
- Almost all contracts are continuing unabated
- Expanded work windows for the safety of workers and the travelling public
- Social distancing in all daily operations and on worksites
- Face coverings or masks where appropriate to the work

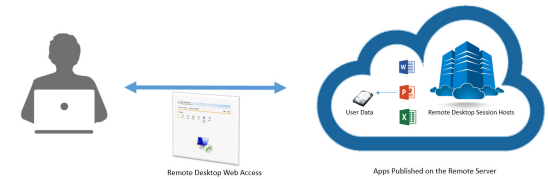


Telework Transformation

- Transforming from infrequent telecommuting to a full mobile workforce
 - Caltrans went from a few hundred teleworkers to 85% to 90% of 13,100 Caltrans office personnel staying away from the office
- Working with CalHR Ensuring that we are providing accurate and timely guidance out to all staff
- Developed a task force in late February to actively address real-time administrative issues and develop responses

Technical Adaptation for Telework

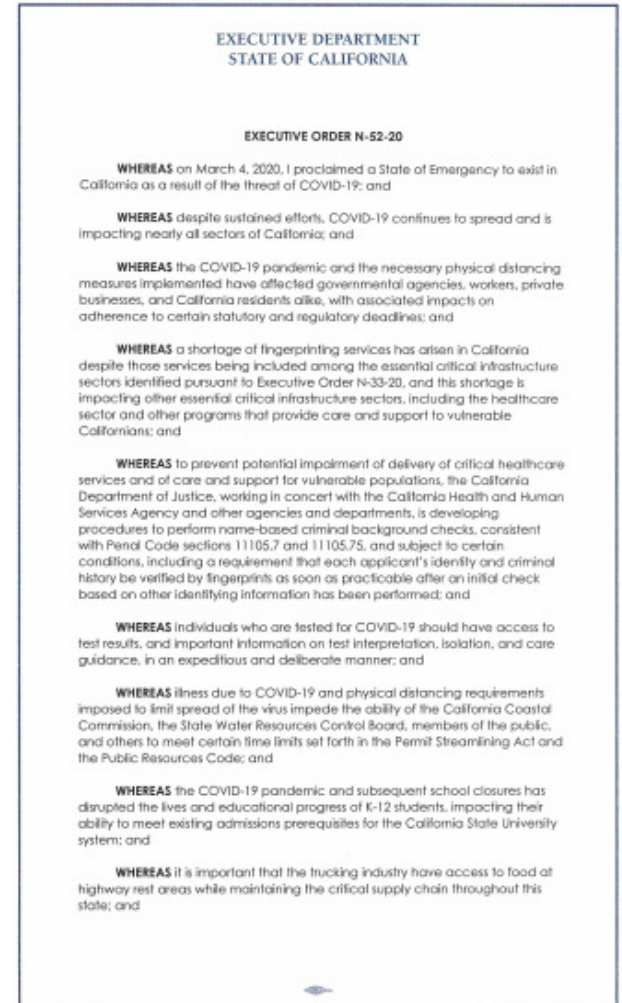
- Increases in hardware and software infrastructure
 - Adding Telework Capacity
 - Scaling up Telework
 - More than doubling VPN capacity
 - Adding Remote Desktop Access
 - Deploying Department-wide web conferencing services



Webex Meetings

Keep California Supplied

- Special Permits for Overweight Trucks:
 - Caltrans issuing special permits authorizing overweight trucks to deliver emergency COVID-19 Supplies across the state
- Special Permits for Food Trucks in Safety Roadside Rest Areas (SRRAs):
 - Executive Order N-52-20 authorized food trucks to temporarily operate at SRRAs in support of truckers

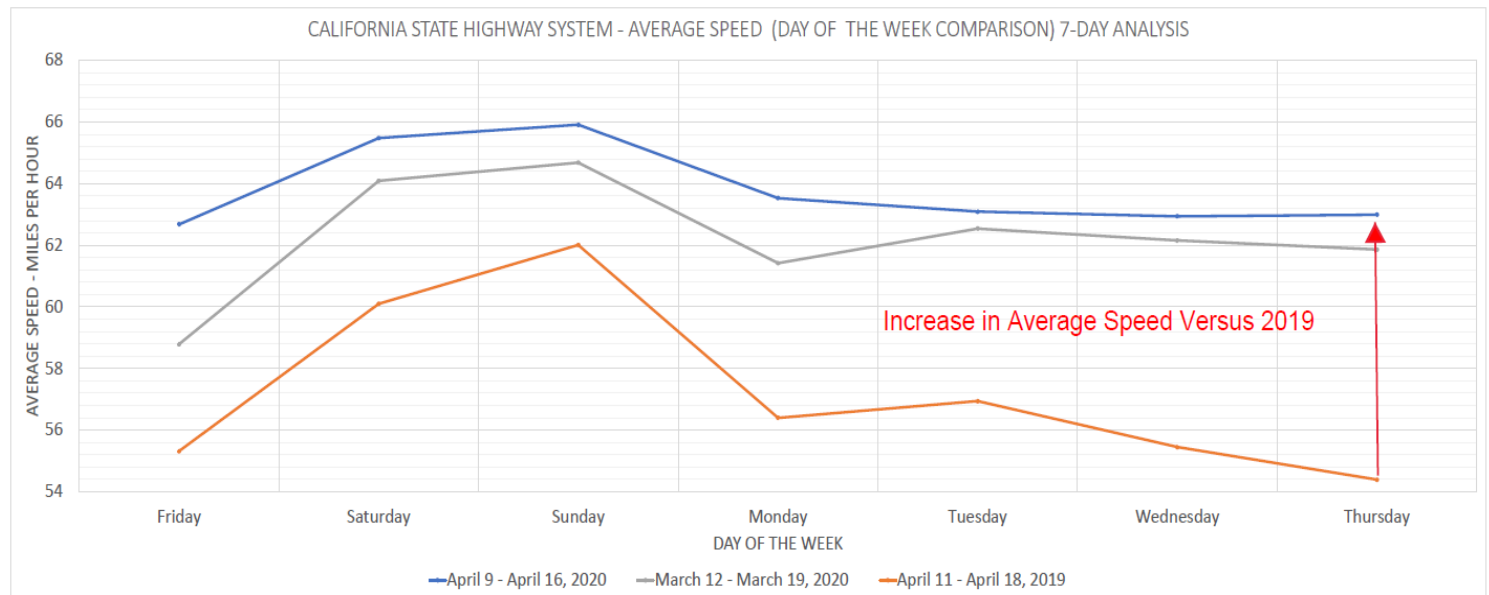
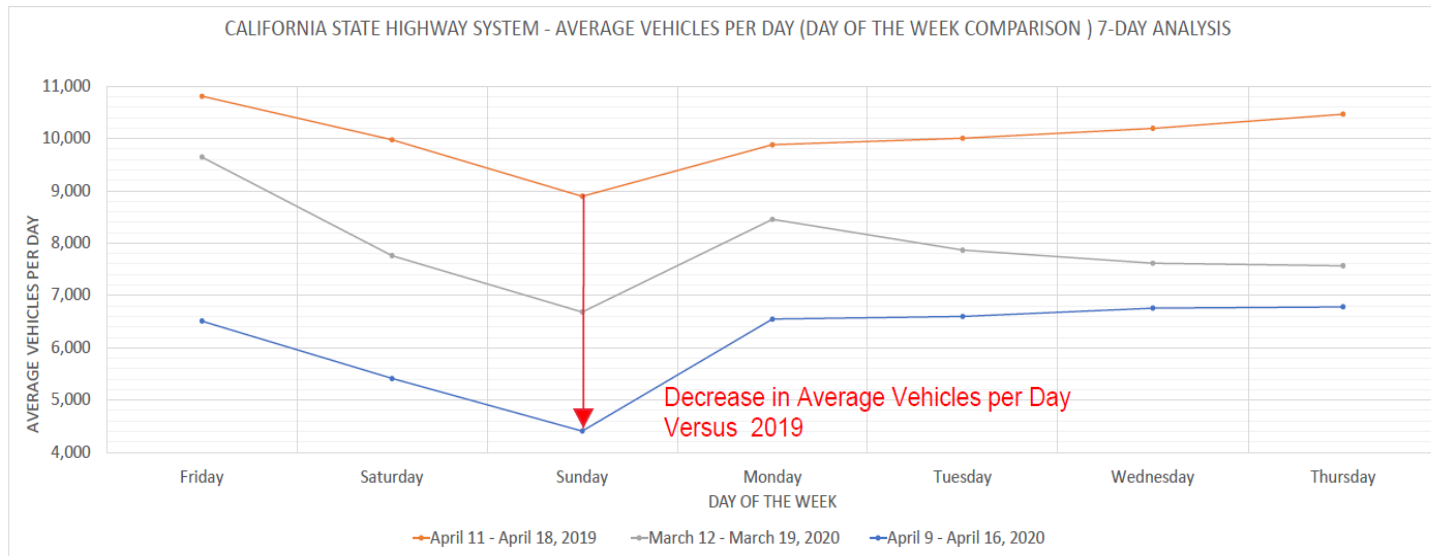


Helping Others

- “Mission Tasking”
 - Provide support for closure of Public Facilities
 - Cones, delineators, barriers, signs
 - Transport of Trailers for unsheltered
 - In addition to the 99 trailers the department recently transported for the homeless crisis, we have transported an additional 132 for the COVID-19 emergency
 - Potential for deployment of additional trailers, and the department stands ready to assist.
- Public Service Announcements on CMS



Decreased Travel, Increased Speed



Workload Challenges

- Transition to Telework
 - Access not in place for all systems
 - Cybersecurity
- In-Person Training postponed
- Certain types of maintenance and construction work must be postponed or reprioritized
- Court closures could impact some R/W and CEQA processes, which may increase risk to project timelines
- Masks, sanitizer, and other PPE in limited availability

Construction Impacts

- Availability of contractor workforce due to COVID-19 illnesses, shelter-in-place orders, and concerns for personal health & safety
 - A very small number of contracts have been suspended at contractor request
- Maintaining social distancing for certain work activities can result in inefficient work-arounds
- Contractor material deliveries may see impacts due to workforce shortages
- Challenges may result in delays to some projects

Intercity Rail

- Ridership

- Unprecedented ridership changes

- Up to 97-percent drops in ridership across the three state-supported Intercity Rail routes

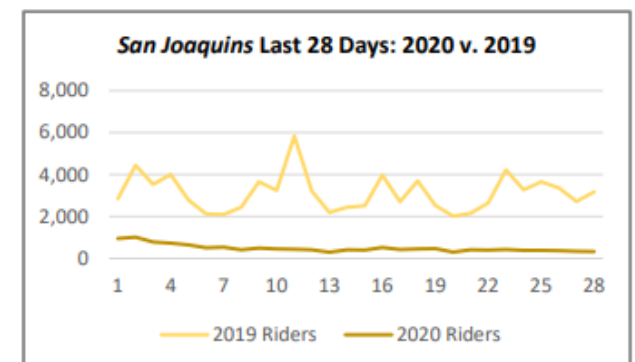
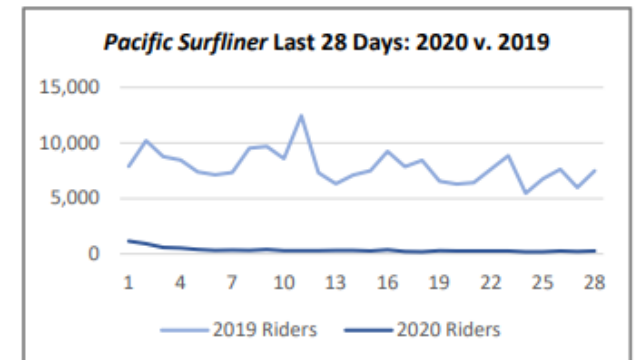
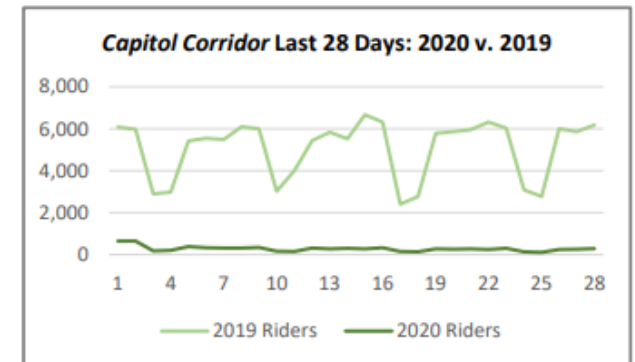
- Commensurate farebox reductions

- Service Changes

- Reduced number of trains

- Limited/reduced stops

- Waived change/cancellation fees



Financial Challenges

- Transportation revenue is primarily based on fuel consumption and will be affected by observed decline in traffic volumes
 - Process of fuel excise tax collection and distribution is lengthy; impacts not yet felt
- Cash balances healthy and impact to capacity will be long-term, not short-term
- As part of May Revise, Department of Finance will release official estimates of impact from current crisis and the ensuing economic downturn
- Potential for Federal Stimulus

Questions

