



# Santa Cruz Branch Rail Line Update



© 2012 Howard Cohen  
All Rights Reserved

Guy Preston, Executive Director  
Santa Cruz County Regional Transportation Commission  
March 2019



# Meeting Conditions of Prop 116 Funds

Short-line railroad operator in place

- 10-year ACL executed between SCCRTC and Progressive Rail, Inc.
- Active freight service
- Passenger rail service requirement met by recreational passenger rail service until commuter rail service is implemented





# Passenger Rail Implementation

## ❖ January 2019 Adoption of the Unified Corridor Investment Study

- Unanimously affirmed leaving railroad infrastructure in place
- **High-capacity transit service planned for the rail corridor**
- Freight service continuing
- Excursion passenger rail service in the near term



## ❖ Next Step - Alternatives Analysis

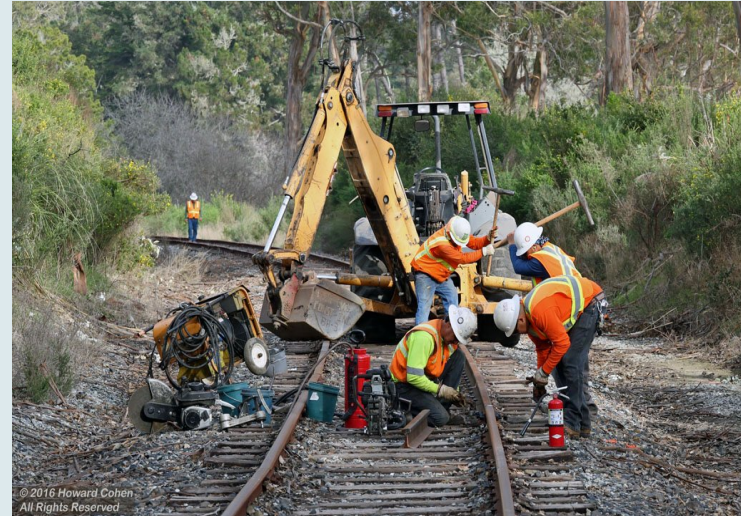
- Simplifies the future CEQA analysis and reduces cost and duration





# Ongoing Efforts

- Storm Damage Repairs – completion 2020
- Inspections of 29 bridges
  - Repairs needed to timber trestles
- Monterey Bay Sanctuary Scenic Trail within the corridor adjacent to the rail
- Working with Caltrans Rail
  - Pursuing Network Integration Study funds for Santa Cruz Branch Rail Line
  - Participating in regional and statewide Network Integration Study efforts



© 2016 Howard Cohen  
All Rights Reserved